

## Spin-On Filters ■ Introduction



### Product Description

STAUFF provides a complete range of Spin-On filters which can be used either as suction filters or as return line filters for low pressure applications. The various ranges meet international standards. The corresponding STAUFF Filter Elements are available from stock.

### Technical Data

#### Material

- Filter head: Aluminium
- Sealings: NBR (Buna-N®)

#### Port Connection

- BSP
- NPT
- SAE Flange
- SAE O-ring thread
- Other port connections on request

#### Operating Pressure

- Up to 14 bar / 200 PSI

#### Nominal Flow Rate

- Up to 460 l/min / 120 US GPM

### Options and Accessories

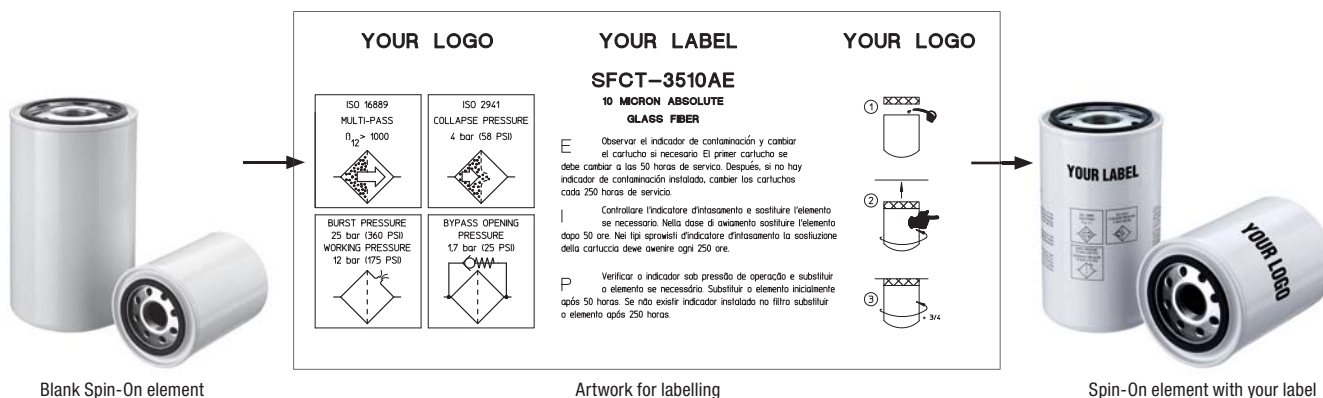
#### Clogging Indicators

- Visual clogging indicator with coloured segments
- Electrical clogging switch
- Other types available on request

#### Private Labelling

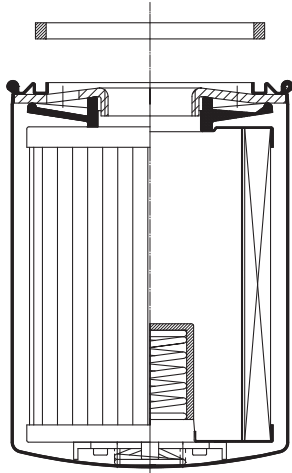
- On request, the filter elements can be printed with a private label

### Private Labeling



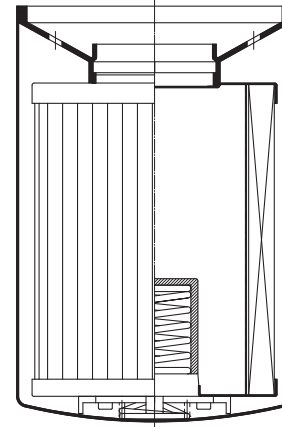
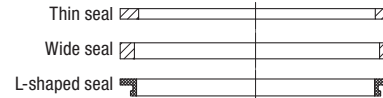
## Spin-On Filters - Quick Reference Guide

**Type A**

 Spin-On Filter with seal contour A  
for filter elements with inner seal

**Type B**

 Spin-On Filter with seal contour B  
for filter elements with outer seal

Allowed seal types for Spin-On elements



## Spin on Filters Quick Reference Guide

## Spin-On Filter Heads

## Spin-On Filter Elements (see page ...)

| Series | Size   | Port                          | Spigot               | Max. Flow Rate* |        | Catalog Page | Seal Contour |        | SF63 | SF65 | SF67 | SFC-35<br>SFC-36 | SFC-57<br>SFC-58 | SFCT-35<br>SFCT-36 | SFCT-57<br>SFCT-58 |
|--------|--------|-------------------------------|----------------------|-----------------|--------|--------------|--------------|--------|------|------|------|------------------|------------------|--------------------|--------------------|
|        |        |                               |                      | l/min           | US GPM |              | Type A       | Type B |      |      |      |                  |                  |                    |                    |
| SLF    | 02     | 1/4 NPT                       | 3/4-16 UNF           | 19              | 5      | C134         | x            |        | C146 |      |      |                  |                  |                    |                    |
| SLF    | 03     | 3/8 NPT                       | 3/4-16 UNF           | 19              | 5      | C134         | x            |        | C146 |      |      |                  |                  |                    |                    |
| SLF    | 04     | 9/16-18 UN                    | 3/4-16 UNF           | 26              | 7      | C134         | x            |        | C146 |      |      |                  |                  |                    |                    |
| SAF    | 05     | 1/2 NPT                       | 1-12 UNF             | 57              | 15     | C135         | x            |        |      | C147 |      |                  |                  |                    |                    |
| SAF    | 06     | 3/4-16 UN                     | 1-12 UNF             | 57              | 15     | C135         | x            |        |      | C147 |      |                  |                  |                    |                    |
| SAF    | 07     | 3/4 NPT                       | 1-12 UNF             | 90              | 25     | C135         | x            |        |      | C147 |      |                  |                  |                    |                    |
| SAF    | 11     | 1-1/16-12 UN                  | 1-12 UNF             | 90              | 25     | C135         | x            |        |      | C147 |      |                  |                  |                    |                    |
| SAF    | 10     | 1 NPT                         | 1-12 UNF             | 128             | 34     | C136         | x            |        |      | C147 |      |                  |                  |                    |                    |
| SAF    | 13     | 1-5/16-12 UN                  | 1-12 UNF             | 128             | 34     | C136         | x            |        |      | C147 |      |                  |                  |                    |                    |
| SSF    | 12/12N | G3/4                          | G3/4                 | 90              | 25     | C137         | x            |        |      |      |      | C144             |                  |                    |                    |
| SSF    | 100    | 1 NPT                         | G1-1/4 + 1-1/2-16 UN | 170             | 45     | C138         | x            | x      |      |      | C148 |                  | C145             |                    |                    |
| SSF    | 120L   | 1-1/4 NPT                     | G1-1/4 + 1-1/2-16 UN | 225             | 60     | C138         | x            | x      |      |      | C148 |                  | C145             |                    |                    |
| SSF    | 120    | 1-1/4 NPT                     | G1-1/4 + 1-1/2-16 UN | 225             | 60     | C138         | x            | x      |      |      | C148 |                  | C145             |                    |                    |
| SSF    | 130    | 1-5/16-12 UN                  | G1-1/4 + 1-1/2-16 UN | 225             | 60     | C138         | x            | x      |      |      | C148 |                  | C145             |                    |                    |
| SSF    | 160    | 1-5/8-12 UN                   | G1-1/4 + 1-1/2-16 UN | 225             | 60     | C138         | x            | x      |      |      | C148 |                  | C145             |                    |                    |
| SSF    | 150    | 1-1/2 NPT                     | 1-1/2-16 UN          | 300             | 80     | C139         |              | x      |      |      | C148 |                  |                  |                    |                    |
| SSF    | 180    | 1-7/8-12 UN                   | 1-1/2-16 UN          | 300             | 80     | C139         |              | x      |      |      | C148 |                  |                  |                    |                    |
| SSF    | 24N    | 1-1/2 NPT                     | G1-1/4 + 1-1/2-16 UN | 454             | 120    | C140         | x            | x      |      |      | C148 |                  | C145             |                    |                    |
| SSF    | 24S    | 1-7/8-12 UN                   | G1-1/4 + 1-1/2-16 UN | 454             | 120    | C140         | x            | x      |      |      | C148 |                  | C145             |                    |                    |
| SSF    | 25     | 1-1/2 NPT and<br>2 SAE Flange | G1-1/4 + 1-1/2-16 UN | 454             | 120    | C141         | x            | x      |      |      | C148 |                  | C145             |                    |                    |
| SSFT   | 12     | 3/4 NPT                       | G3/4                 | 75              | 20     | C142         | x            | x      |      |      |      |                  |                  | C144               |                    |
| SSFT   | 20     | 1-1/2 NPT                     | G1-1/4 + 1-1/2-16 UN | 200             | 53     | C143         | x            |        |      |      |      |                  |                  |                    | C145               |

\* Note: Reflects nominal flow rate for return line application. Actual flow rate will depend on selected element and the viscosity of the fluid.

## Spin-On Filter Heads ■ SLF-02 / 03 / 04

## Dimensions



## Technical Data

## Construction

- In-line Spin-On filter head

## Material

- Aluminium

## Port Connection

- NPT
- SAE O-ring thread

## Flow Rate

- 26 l/min / 7 US GPM for return line application
- 7 l/min / 2 US GPM for suction line application

## Operating Pressure

- Max. 14 bar / 200 PSI
- Max. 5,5 bar / 80 PSI differential pressure (for any application with no bypass valve)

## Temperature Range

- -32°C ... +100°C / -25°F ... +212°F

## Media Compatibility

- Mineral oils, other fluids on request

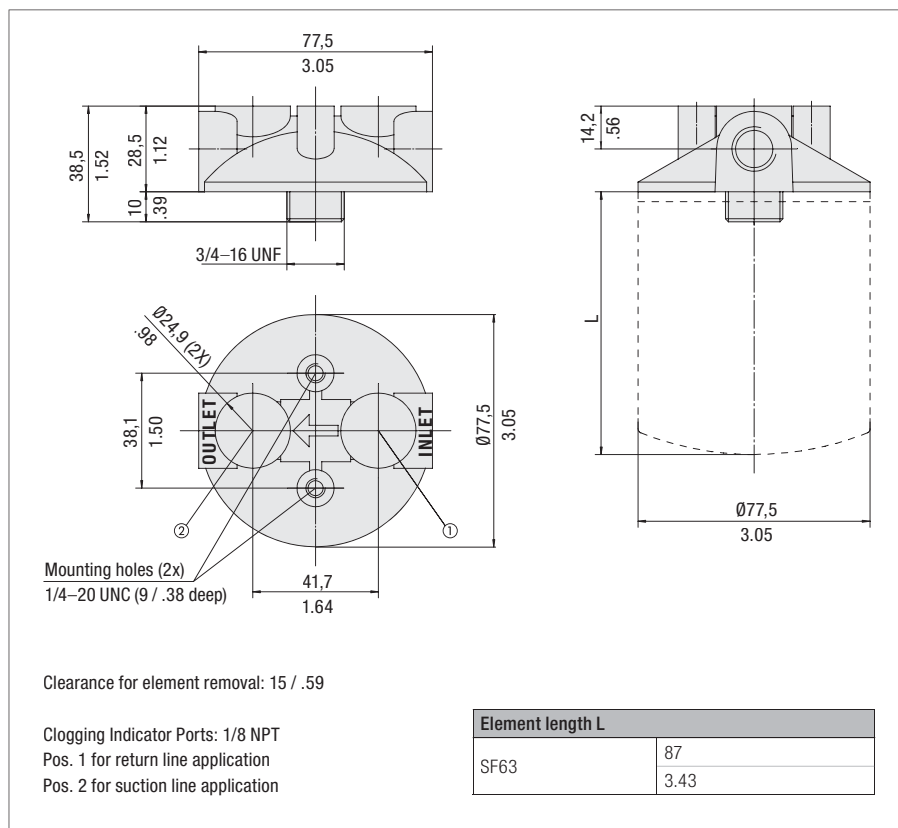
## Options and Accessories

## Filter Elements

- For use with SF63 series elements
- For element types with seal contour type A
- For element types and flow characteristics see page C146
- The element is not part of the scope of delivery

## Clogging Indicators

- Visual clogging indicator with coloured segments
- Electrical clogging switch 0,35 ... 2,5 bar / 5 ... 35 PSI adjustable
- For clogging indicator types see page C152



Dimensions in mm / in

## Order Code

SLF - 02 - 0

1 2 3

## 1 Type

Spin-On Filter Head SLF

## 2 Connection Style

| Connection | Thread  | Code |
|------------|---------|------|
| NPT        | 1/4     | 02   |
| NPT        | 3/8     | 03   |
| SAE        | 9/16-18 | 04   |

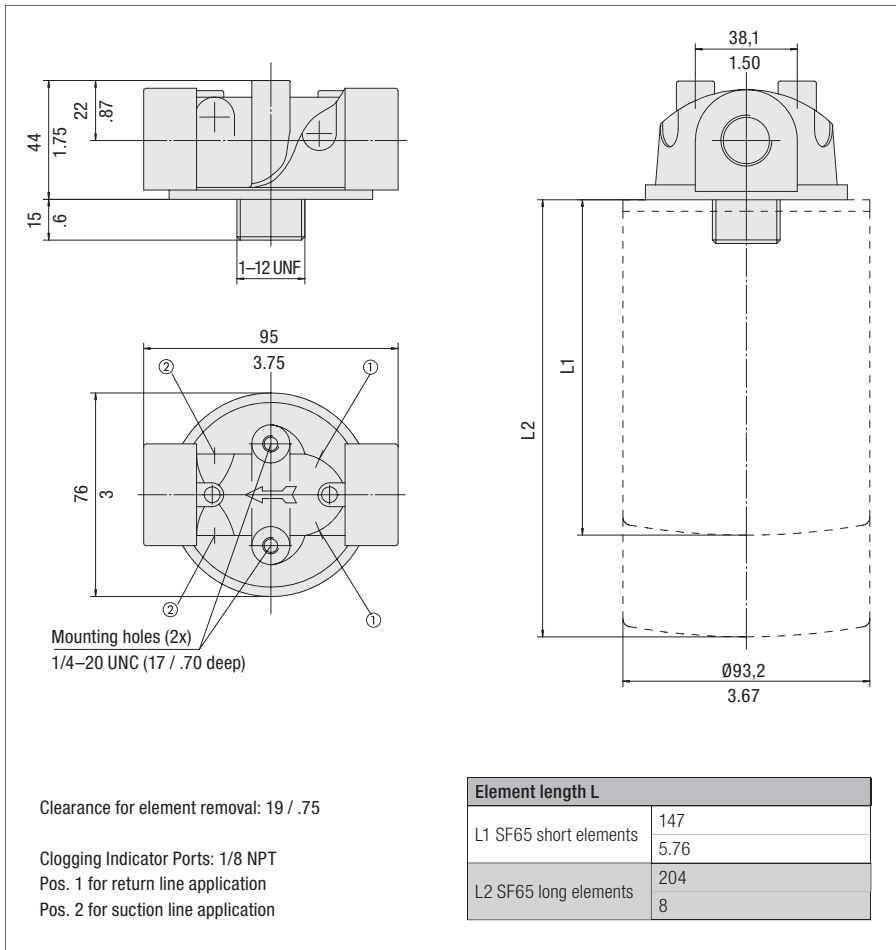
## 3 Clogging Indicator Port Options

|  |   |
|--|---|
| No clogging indicator port                                   | 0 |
| Clogging indicator port drilled for return line application  | 1 |
| Clogging indicator port drilled for suction line application | 2 |
| All clogging indicator ports drilled                         | 4 |
| Special  | 9 |

Note: Standard clogging indicator port is 1/8 NPT.

## Spin-On Filter Heads - SAF-05 / 06 / 07 / 11

## Dimensions



## Technical Data

**Construction**

- In-line Spin-On filter head

**Material**

- Aluminium

**Port Connection**

- NPT
- SAE O-ring thread

**Flow Rate**

- 90 l/min / 25 US GPM for return line application
- 23 l/min / 6 US GPM for suction line application

**Operating Pressure**

- Max. 14 bar / 200 PSI
- Max. 5,5 bar / 80 PSI differential pressure (for any application with no bypass valve)

**Temperature Range**

- 32°C ... +100°C / -25°F ... +212°F

**Media Compatibility**

- Mineral oils, other fluids on request

## Options and Accessories

**Filter Elements**

- For use with SF65 series elements
- For element types with seal contour type A
- For element types and flow characteristics see page C147
- The element is not part of the scope of delivery

**Valve**

- Bypass valve (integrated in the head): Optional

**Clogging Indicators**

- Visual clogging indicator with coloured segments
- Electrical clogging switch 0,35 ... 2,5 bar / 5 ... 35 PSI adjustable
- For clogging indicator types see page C152

## Order Code

**SAF - 07 - 25 - 0**

1 2 3 4

**1 Type**

 Spin-On Filter Head **SAF**
**2 Connection Style**

| Connection | Thread    | Code      |
|------------|-----------|-----------|
| NPT        | 1/2       | <b>05</b> |
| SAE        | 3/4-16    | <b>06</b> |
| NPT        | 3/4       | <b>07</b> |
| SAE        | 1-1/16-12 | <b>11</b> |

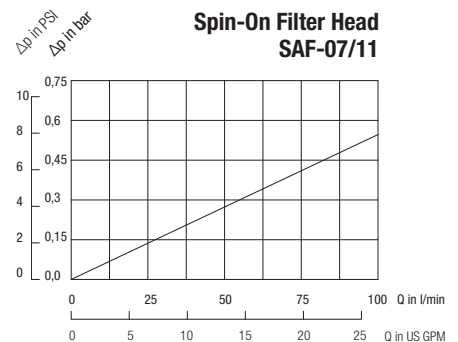
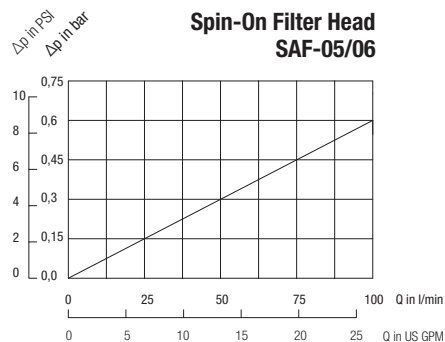
**3 Bypass Options**

|                  |           |
|------------------|-----------|
| No bypass        | <b>00</b> |
| 0,2 bar / 3 PSI  | <b>03</b> |
| 0,35 bar / 5 PSI | <b>05</b> |
| 1 bar / 15 PSI   | <b>15</b> |
| 1,7 bar / 25 PSI | <b>25</b> |

**4 Clogging Indicator Port Options**

|  |          |
|--|----------|
| No clogging indicator port                                   | <b>0</b> |
| Clogging indicator port drilled for return line application  | <b>1</b> |
| Clogging indicator port drilled for suction line application | <b>2</b> |
| All clogging indicator ports drilled                         | <b>4</b> |
| Special  | <b>9</b> |

Note: Standard clogging indicator port is 1/8 NPT.



## Spin-On Filter Heads ■ SAF-10 / 13



## Technical Data

## Construction

- In-line Spin-On filter head

## Material

- Aluminium

## Port Connection

- NPT
- SAE O-ring thread

## Flow Rate

- 128 l/min / 34 US GPM for return line application
- 30 l/min / 8 US GPM for suction line application

## Operating Pressure

- Max. 14 bar / 200 PSI
- Max. 5,5 bar / 80 PSI differential pressure (for any applicaton with no bypass valve)

## Temperature Range

- -32°C ... +100°C / -25°F ... +212°F

## Media Compatibility

- Mineral oils, other fluids on request

## Options and Accessories

## Filter Elements

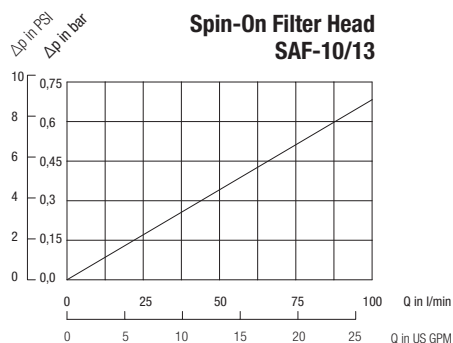
- For use with SF65 series elements
- For element types with seal contour type A
- For element types and flow characteristics see page C147
- The element is not part of the scope of delivery

## Valve

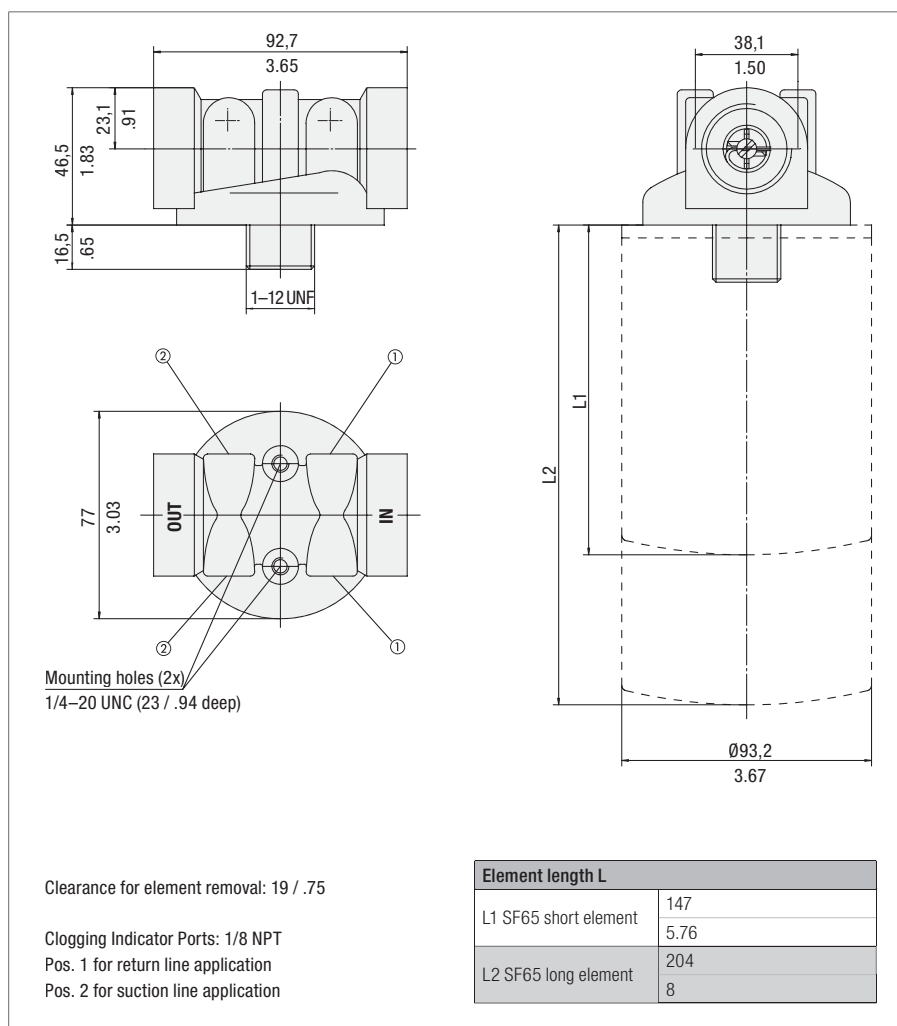
- Bypass valve (integrated in the filter head): Optional

## Clogging Indicators

- Visual clogging indicator with coloured segments
- Electrical clogging switch 0,35 ... 2,5 bar / 5 ... 35 PSI adjustable
- For clogging indicator types see page C152



## Dimensions



## Order Code

**SAF - 10 - 25 - 0**

1 2 3 4

## 1 Type

Spin-On Filter Head **SAF**

## 2 Connection Style

| Connection | Thread    | Code      |
|------------|-----------|-----------|
| NPT        | 1         | <b>10</b> |
| SAE        | 1-5/16-12 | <b>13</b> |

## 3 Bypass Options

|                  |           |
|------------------|-----------|
| No bypass        | <b>00</b> |
| 0,2 bar / 3 PSI  | <b>03</b> |
| 0,35 bar / 5 PSI | <b>05</b> |
| 1 bar / 15 PSI   | <b>15</b> |
| 1,7 bar / 25 PSI | <b>25</b> |

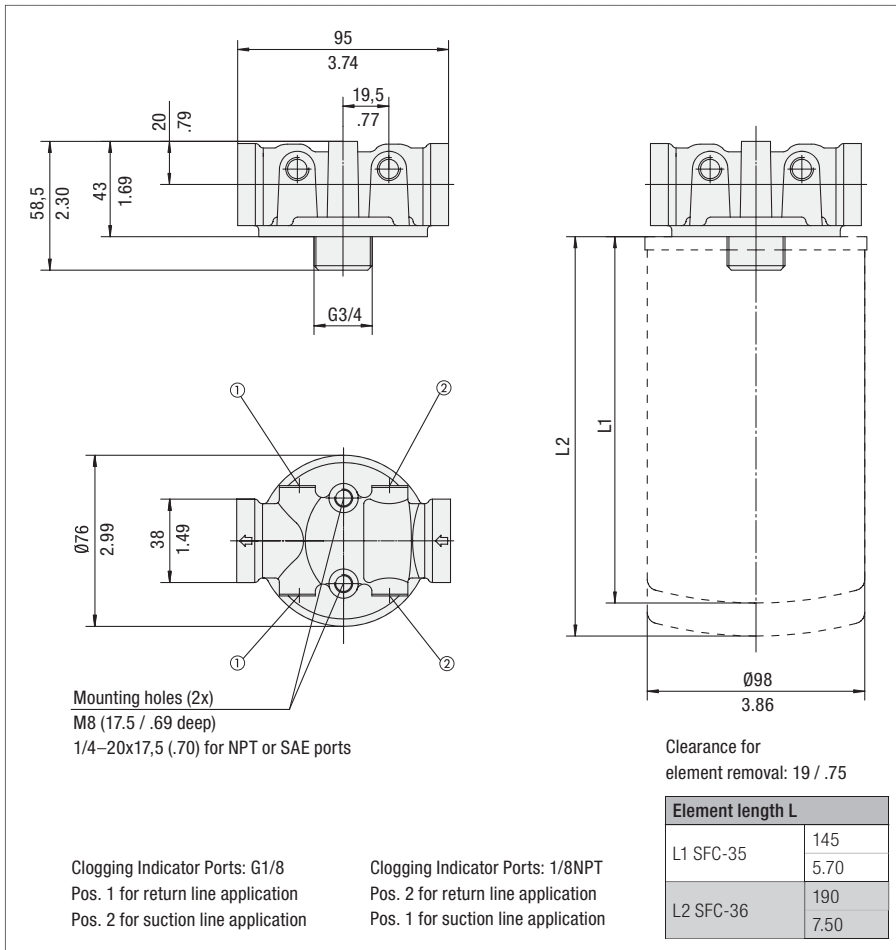
## 4 Clogging Indicator Port Options

|  |          |
|--|----------|
| No clogging indicator port                                   | <b>0</b> |
| Clogging indicator port drilled for return line application  | <b>1</b> |
| Clogging indicator port drilled for suction line application | <b>2</b> |
| All clogging indicator ports drilled                         | <b>4</b> |
| Special  | <b>9</b> |

Note: Standard clogging indicator port is 1/8 NPT.

## Spin-On Filter Heads ■ SSF-12 / 12N

## Dimensions



Dimensions in mm / in



## Technical Data

**Construction**

- In-line Spin-On filter head

**Material**

- Aluminium

**Port Connection**

- BSP

**Flow Rate**

- 90 l/min / 25 US GPM for return line application
- 23 l/min / 6 US GPM for suction line application

**Operating Pressure**

- Max. 12 bar / 174 PSI
- Max. 4 bar / 58 PSI differential pressure (for any application with no bypass valve)

**Temperature Range**

- -32°C ... +100°C / -25°F ... +212°F

**Media Compatibility**

- Mineral oils, other fluids on request

## Options and Accessories

**Filter Elements**

- For use with SFC-35/36 series elements
- For element types with seal contour type A
- For element types and flow characteristics see page C144
- The element is not part of the scope of delivery

**Valve**

- Bypass valve (integrated in the filter head): Optional

**Clogging Indicators**

- Visual clogging indicator with coloured segments
- Electrical clogging switch 1,3 bar / 19 PSI adjustable
- For clogging indicator types see page C152

## Order Code

**SSF - 12 - 25 - 4**

1 2 3 4

**1 Type**

 Spin-On Filter Head **SSF**
**2 Connection Style**

| Connection | Thread | Code       |
|------------|--------|------------|
| BSP        | 3/4    | <b>12</b>  |
| NPT        | 3/4    | <b>12N</b> |

**3 Bypass Options**

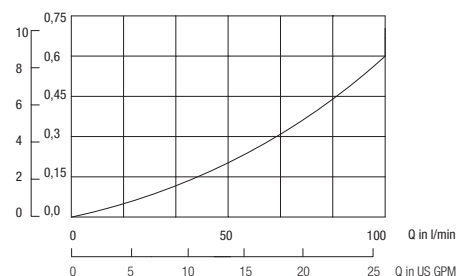
|                  |           |
|------------------|-----------|
| No bypass        | <b>00</b> |
| 0,2 bar / 3 PSI  | <b>03</b> |
| 1,7 bar / 25 PSI | <b>25</b> |

Note: Other settings available on request.

**4 Clogging Indicator Port Options**

|                                      |          |
|--------------------------------------|----------|
| All clogging indicator ports drilled | <b>4</b> |
| Special                              | <b>9</b> |

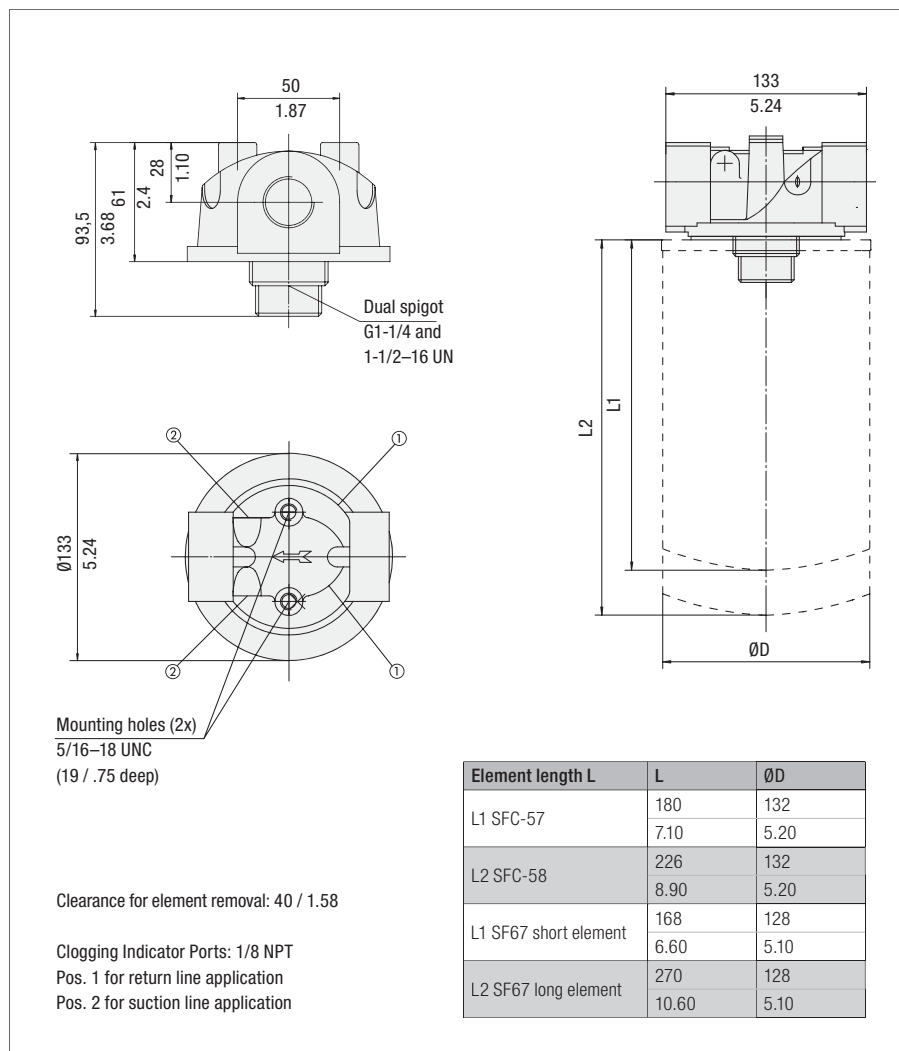
Note: Standard clogging indicator port is G1/8.

 Spin-On Filter Head  
SSF-12


Spin-On Filter Heads - SSF-100 / 120 / 120L / 130 / 160



Dimensions



Technical Data

Construction

- In-line Spin-On filter head

Material

- Aluminium

Port Connection

- NPT
- SAE O-ring thread

Flow Rate

- 225 l/min / 60 US GPM for return line application
- 46 l/min / 12 US GPM for suction line application

Operating Pressure

- Max. 14 bar / 200 PSI
- Max. 5,5 bar / 80 PSI differential pressure (for any applicator with no bypass valve)

Temperature Range

- 32°C ... +100°C / -25°F ... +212°F

Media Compatibility

- Mineral oils, other fluids on request

Options and Accessories

Filter Elements

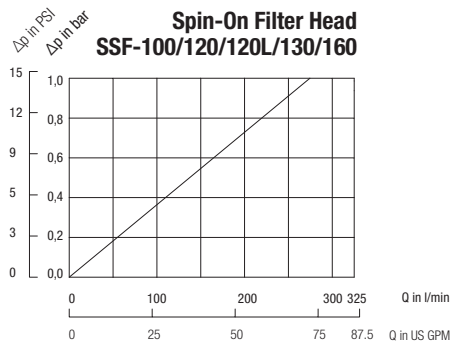
- For use with SF67 and SFC-57/58 series elements
- For element types with seal contour type A and B
- For element types and flow characteristics see page C148 for SF67 and page C149 for SFC-57/58.
- The element is not part of the scope of delivery

Valve

- Bypass valve (integrated in the filter head): Optional

Clogging Indicators

- Visual clogging indicator with coloured segments
- Electrical clogging switch 0,35 ... 2,5 bar / 5 ... 35 PSI adjustable
- For clogging indicator types see page C152



Dimensions in mm / in

Order Code

**SSF - 120 - 25 - 0**

1      2      3      4

1 Type

Spin-On Filter Head      **SSF**

2 Connection Style

| Connection | Thread    | Code        |
|------------|-----------|-------------|
| NPT        | 1         | <b>100</b>  |
| NPT        | 1-1/4     | <b>120L</b> |
| NPT        | 1-1/2     | <b>120</b>  |
| SAE        | 1-5/16-12 | <b>130</b>  |
| SAE        | 1-5/8-12  | <b>160</b>  |

3 Bypass Options

|                  |           |
|------------------|-----------|
| No bypass        | <b>00</b> |
| 0,2 bar / 3 PSI  | <b>03</b> |
| 0,35 bar / 5 PSI | <b>05</b> |
| 1 bar / 15 PSI   | <b>15</b> |
| 1,7 bar / 25 PSI | <b>25</b> |

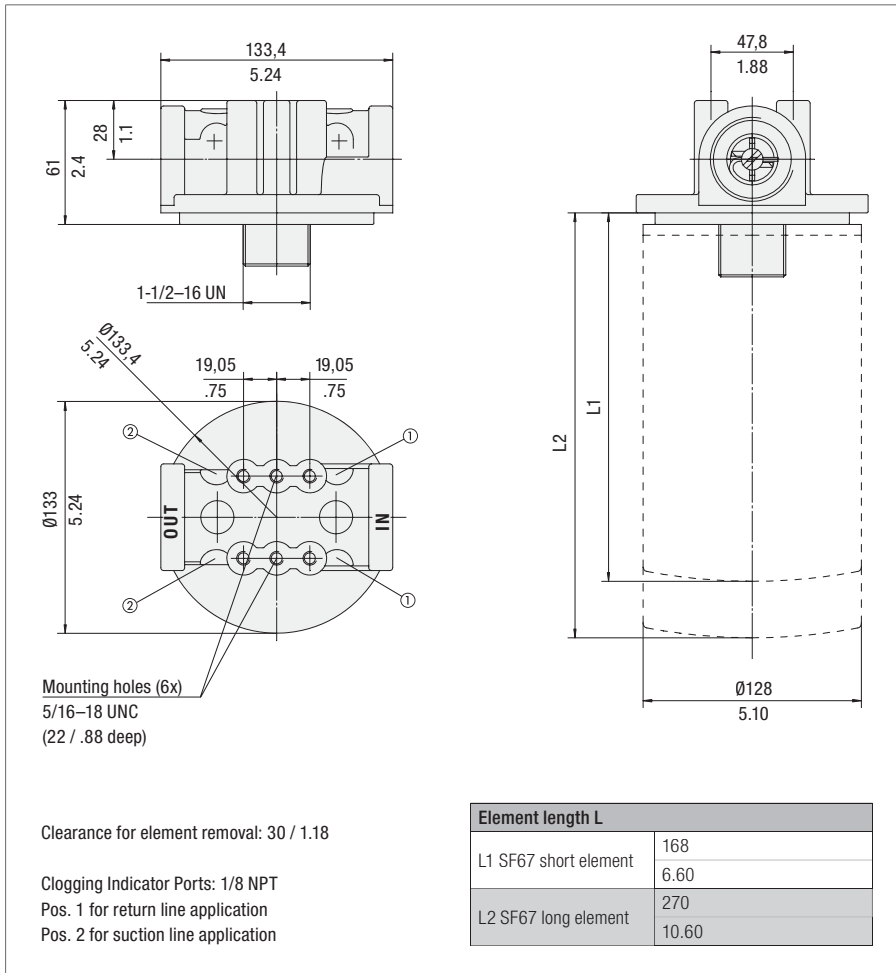
4 Clogging Indicator Port Options

|  |          |
|--|----------|
| No clogging indicator port                                   | <b>0</b> |
| Clogging indicator port drilled for return line application  | <b>1</b> |
| Clogging indicator port drilled for suction line application | <b>2</b> |
| All clogging indicator ports drilled                         | <b>4</b> |
| Special  | <b>9</b> |

Note: Standard clogging indicator port is 1/8 NPT.

## Spin-On Filter Heads - SSF-150 / 180

## Dimensions



Dimensions in mm / in



## Technical Data

**Construction**

- In-line Spin-On filter head

**Material**

- Aluminium

**Port Connection**

- NPT
- SAE O-ring thread

**Flow Rate**

- 300 l/min / 80 US GPM for return line application
- 113 l/min / 30 US GPM for suction line application

**Operating Pressure**

- Max. 14 bar / 200 PSI
- Max. 5.5 bar / 80 PSI differential pressure (for any application with no bypass valve)

**Temperature Range**

- 32°C ... +100°C / -25°F ... +212°F

**Media Compatibility**

- Mineral oils, other fluids on request

## Options and Accessories

**Filter Elements**

- For use with SF67 series elements
- For element types with seal contour type B
- For element types and flow characteristics see page C148
- The element is not part of the scope of delivery

**Valve**

- Bypass valve (integrated in the filter head): Optional

**Clogging Indicators**

- Visual clogging indicator with coloured segments
- Electrical clogging switch 0,35 ... 2,5 bar / 5 ... 35 PSI adjustable
- For clogging indicator types see page C152

## Order Code

**SSF - 150 - 25 - 0**

1 2 3 4

**1 Type**

 Spin-On Filter Head **SSF**
**2 Connection Style**

| Connection | Thread   | Code       |
|------------|----------|------------|
| NPT        | 1-1/2    | <b>150</b> |
| SAE        | 1-7/8-12 | <b>180</b> |

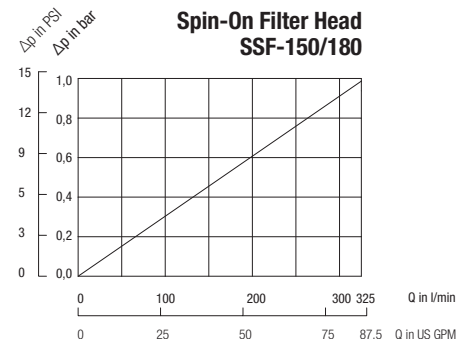
**3 Bypass Options**

|                  |           |
|------------------|-----------|
| No bypass        | <b>00</b> |
| 0,2 bar / 3 PSI  | <b>03</b> |
| 0,35 bar / 5 PSI | <b>05</b> |
| 1 bar / 15 PSI   | <b>15</b> |
| 1,7 bar / 25 PSI | <b>25</b> |

**4 Clogging Indicator Port Options**

|  |          |
|--|----------|
| No clogging indicator port                                   | <b>0</b> |
| Clogging indicator port drilled for return line application  | <b>1</b> |
| Clogging indicator port drilled for suction line application | <b>2</b> |
| All clogging indicator ports drilled                         | <b>4</b> |
| Special  | <b>9</b> |

Note: Standard clogging indicator port is 1/8 NPT.





## Double Spin-On Filter Heads - SSF-24N / 24S



### Technical Data

#### Construction

- In-line Double Spin-On filter head

#### Material

- Aluminium

#### Port Connection

- NPT
- SAE flange
- SAE O-ring thread

#### Flow Rate

- 454 l/min / 120 US GPM for return line application
- 132 l/min / 35 US GPM for suction line application

#### Operating Pressure

- Max. 12 bar / 174 PSI
- Max. 5,5 bar / 80 PSI differential pressure (for any application with no bypass valve)

#### Temperature Range

- 30°C ... +100°C / -22°F ... +212°F

#### Media Compatibility

- Mineral oils, other fluids on request

### Options and Accessories

#### Filter Elements

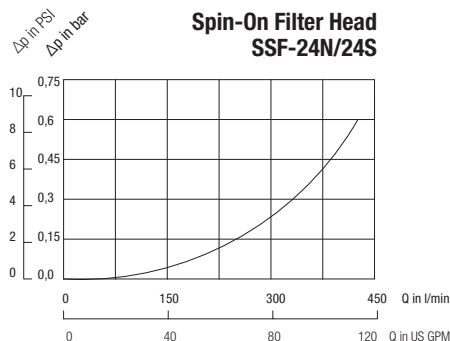
- For use with SF67 and SFC-57/58 series elements
- For element types with seal contour type A and B
- For element types and flow characteristics see page C148 for SF67 and page C145 for SFC-57/58
- The element is not part of the scope of delivery

#### Valve

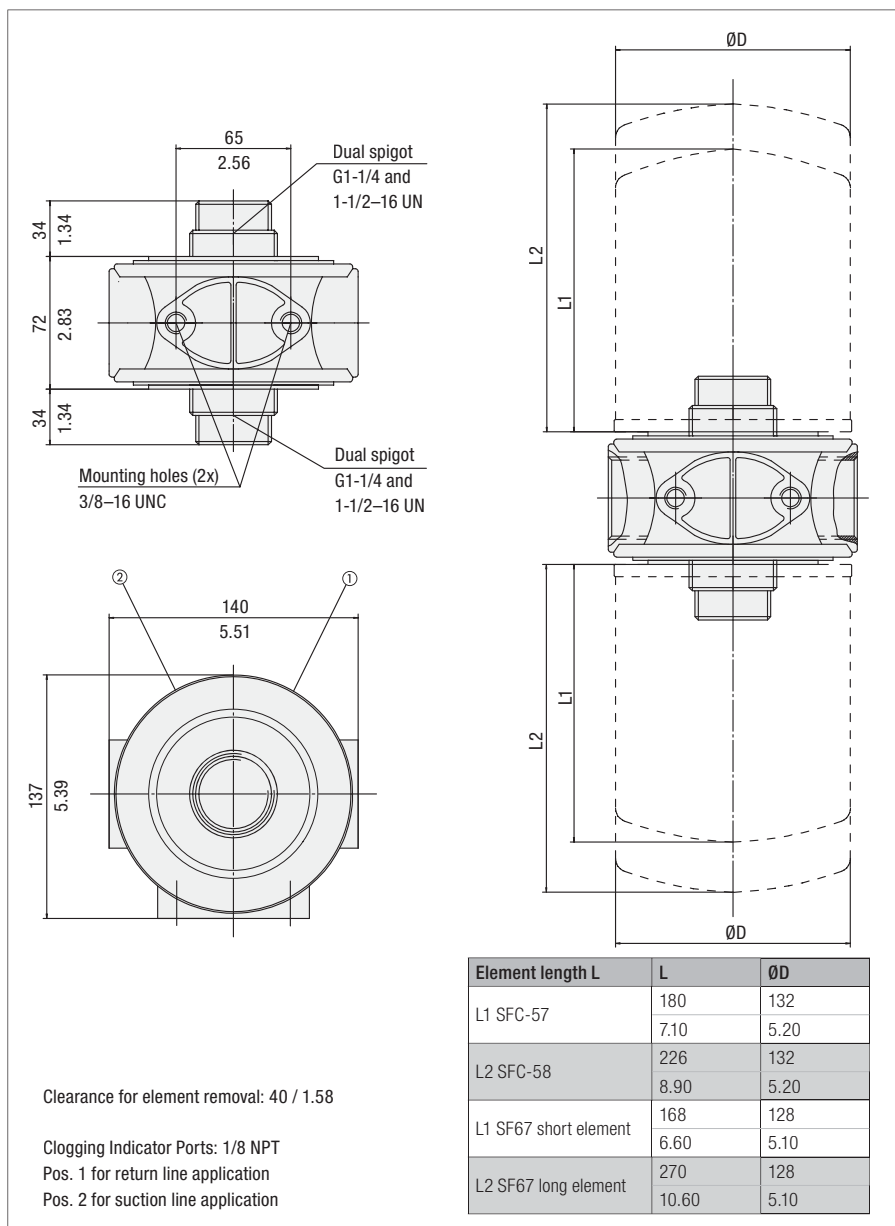
- Bypass valve (integrated in the head): Optional

#### Clogging Indicators

- Visual clogging indicator with coloured segments
- Electrical clogging switch 0,35 ... 2,5 bar / 5 ... 35 PSI adjustable
- For clogging indicator types see page C152



### Dimensions



Dimensions in mm / in

### Order Code

**SSF - 24N - 25 - 0**

1 2 3 4

#### 1 Type

Double Spin-On Filter Head **SSF**

#### 2 Connection Style

| Connection | Thread   | Code       |
|------------|----------|------------|
| NPT        | 1-1/2    | <b>24N</b> |
| SAE        | 1-7/8-12 | <b>24S</b> |

#### 3 Bypass Options

|                  |           |
|------------------|-----------|
| No bypass        | <b>00</b> |
| 0,2 bar / 3 PSI  | <b>03</b> |
| 0,35 bar / 5 PSI | <b>05</b> |
| 1 bar / 15 PSI   | <b>15</b> |
| 1,7 bar / 25 PSI | <b>25</b> |

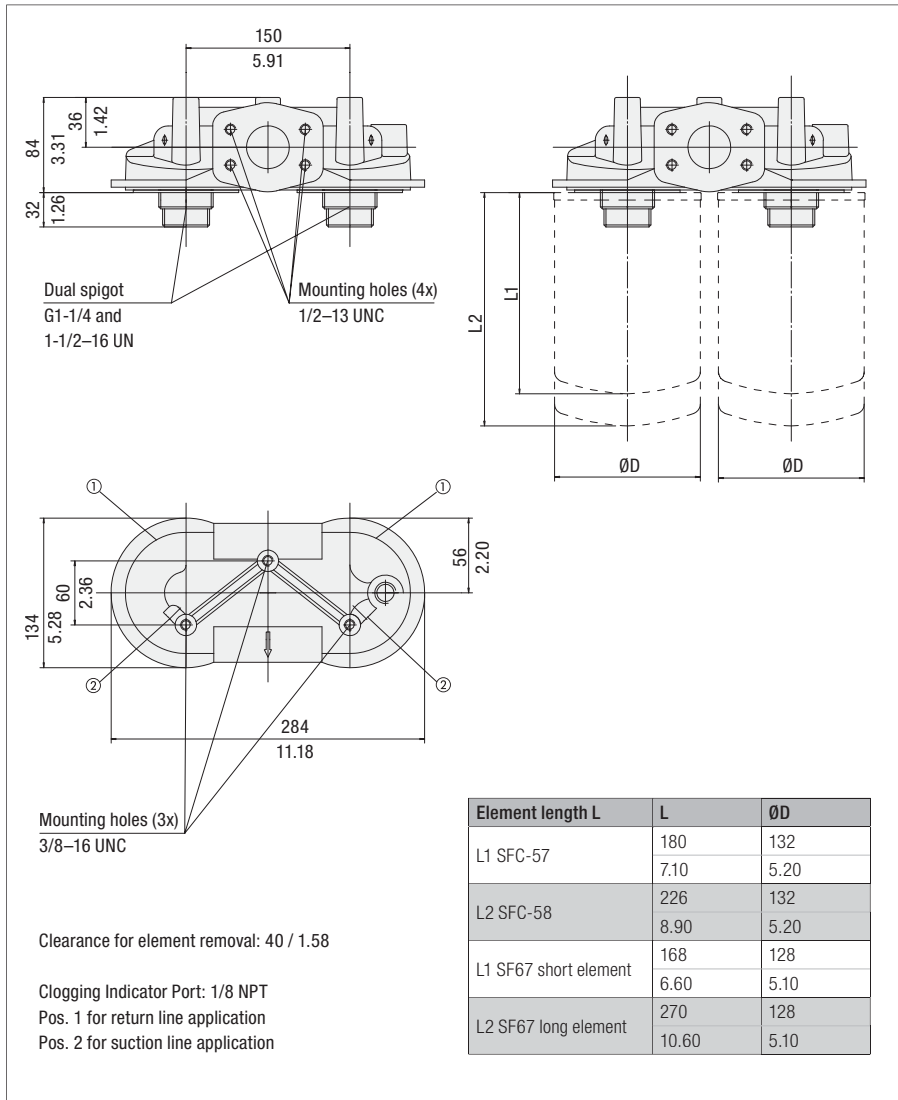
#### 4 Clogging Indicator Port Options

|  |          |
|--|----------|
| No clogging indicator port                                   | <b>0</b> |
| Clogging indicator port drilled for return line application  | <b>1</b> |
| Clogging indicator port drilled for suction line application | <b>2</b> |
| All clogging indicator ports drilled                         | <b>4</b> |
| Special  | <b>9</b> |

Note: Standard clogging indicator port is 1/8 NPT.

## Double Spin-On Filter Heads - SSF-25

## Dimensions



Dimensions in mm / in

## Order Code

**SSF - 25 - 25 - 0**

1 2 3 4

**1 Type**

 Double Spin-On Filter Head **SSF**
**2 Connection Style**

| Connection         | Thread                         | Code      |
|--------------------|--------------------------------|-----------|
| NPT and SAE Flange | 1-1/2 and 2 SAE Code 61 Flange | <b>25</b> |

**3 Bypass Options**

|                  |           |
|------------------|-----------|
| No bypass        | <b>00</b> |
| 0,2 bar / 3 PSI  | <b>03</b> |
| 0,35 bar / 5 PSI | <b>05</b> |
| 1 bar / 15 PSI   | <b>15</b> |
| 1,7 bar / 25 PSI | <b>25</b> |

**4 Clogging Indicator Port Options**

|  |          |
|--|----------|
| No clogging indicator port                                   | <b>0</b> |
| Clogging indicator port drilled for return line application  | <b>1</b> |
| Clogging indicator port drilled for suction line application | <b>2</b> |
| All clogging indicator ports drilled                         | <b>4</b> |
| Special  | <b>9</b> |

Note: Standard clogging indicator port is 1/8 NPT.


**Technical Data**
**Construction**

- In-line Double Spin-On filter head

**Material**

- Aluminium

**Port Connection**

- NPT
- SAE flange

**Flow Rate**

- 454 l/min / 120 US GPM for return line application
- 132 l/min / 35 US GPM for suction line application

**Operating Pressure**

- Max. 12 bar / 174 PSI
- Max. 5,5 bar / 80 PSI differential pressure (for any application with no bypass valve)

**Temperature Range**

- 30°C ... +100°C / -22°F ... +212°F

**Media Compatibility**

- Mineral oils, other fluids on request

**Options and Accessories**
**Filter Elements**

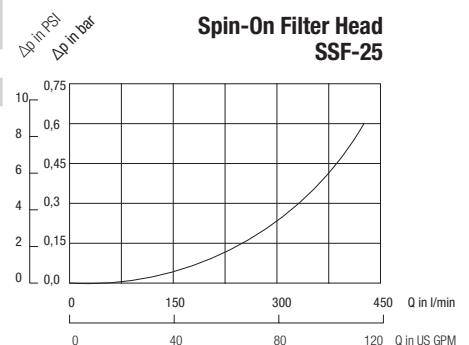
- For use with SF67 and SFC-57/58 series elements
- For element types with seal contour type A and B
- For element types and flow characteristics see page C148 for SF67 and page C145 for SFC-57/58
- The element is not part of the scope of delivery

**Valve**

- Bypass valve (integrated in the head): Optional

**Clogging Indicators**

- Visual clogging indicator with coloured segments
- Electrical clogging switch 0,35 ... 2,5 bar / 5 ... 35 PSI adjustable
- For clogging indicator types see page C152



## Tank Top Spin-On Filter Heads - SSFT-12



## Technical Data

## Construction

- Tank Top Spin-On filter head

## Material

- Aluminium

## Port Connection

- NPT

## Flow Rate

- 75 l/min / 20 US GPM

## Operating Pressure

- Max. 7 bar / 100 PSI

## Temperature Range

- 30°C ... +100°C / -22°F ... +212°F

## Media Compatibility

- Mineral oils, other fluids on request

## Options and Accessories

## Filter Elements

- For use with SFCT-35/36 series elements
- For element types with seal contour type A and B
- For element types and flow characteristics see page C144
- The element is not part of the scope of delivery

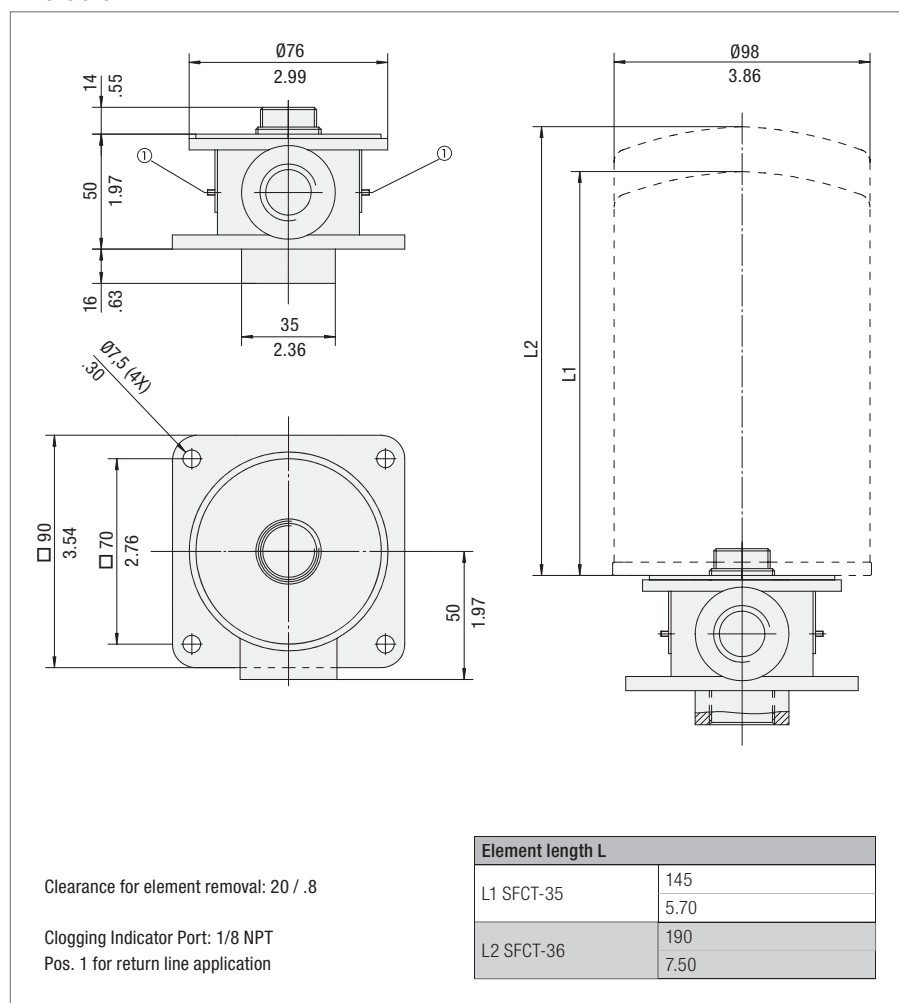
## Valve

- Bypass valve 1,7 bar / 25 PSI integrated in the filter element

## Clogging Indicators

- Visual clogging indicator with coloured segments
- Electrical clogging switch 0,35 ... 2,5 bar / 5 ... 35 PSI adjustable
- For clogging indicator types see page C152

## Dimensions



Dimensions in mm / in

## Order Code

**SSFT - 12 - 1**

1

2

3

## 1 Type

Spin-On Filter Head **SSFT**

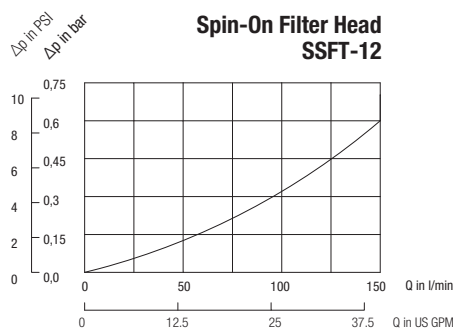
## 2 Connection Style

| Connection | Thread | Code      |
|------------|--------|-----------|
| NPT        | 3/4    | <b>12</b> |

## 3 Clogging Indicator Port Options

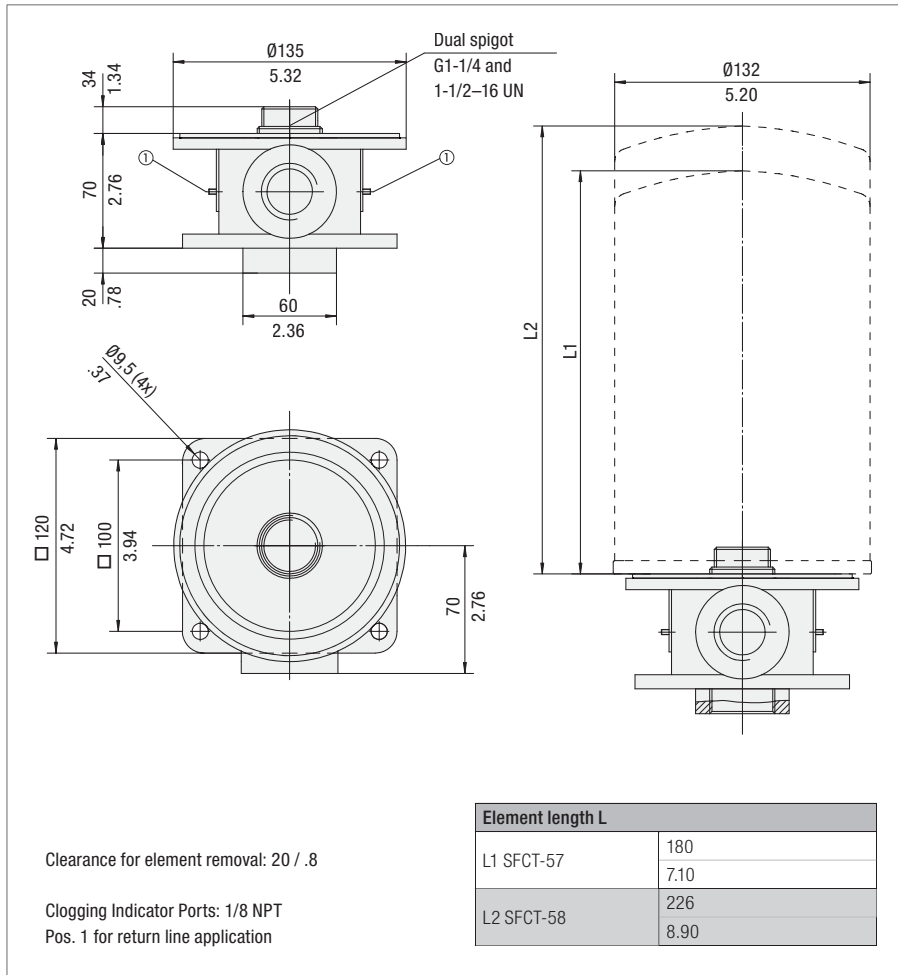
|   |          |
|---|----------|
| No clogging indicator port                                  | <b>0</b> |
| Clogging indicator port drilled for return line application | <b>1</b> |
| Special   | <b>9</b> |

Note: Standard clogging indicator port is 1/8 NPT.



## Tank Top Spin-On Filter Heads - SSFT-20

## Dimensions



Dimensions in mm / in



## Technical Data

**Construction**

- Tank Top Spin-On filter head

**Material**

- Aluminium

**Port Connection**

- NPT

**Flow Rate**

- 200 l/min / 53 US GPM

**Operating Pressure**

- Max. 7 bar / 100 PSI

**Temperature Range**

- 30°C ... +100°C / -22°F ... +212°F

**Media Compatibility**

- Mineral oils, other fluids on request

**Options and Accessories**
**Filter Elements**

- For use with SFCT-57/58 series elements
- For element types with seal contour type A
- For element types and flow characteristics see page C145
- The element is not part of the scope of delivery

**Valve**

- Bypass valve 1,7 bar / 25 PSI integrated in the filter element

**Clogging Indicators**

- Visual clogging indicator with coloured segments
- Electrical clogging switch 0,35 ... 2,5 bar / 5 ... 35 PSI adjustable
- For clogging indicator types see page C152

## Order Code

**SSFT-20-1**

1 2 3

**1 Type**

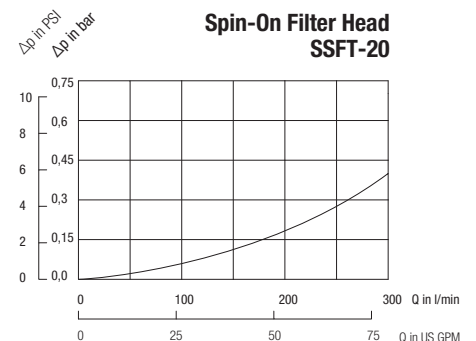
 Spin-On Filter Head **SSFT**
**2 Connection Style**

| Connection | Thread | Code      |
|------------|--------|-----------|
| NPT        | 1-1/2  | <b>20</b> |

**3 Clogging Indicator Port Options**

|   |          |
|---|----------|
| No clogging indicator port                                  | <b>0</b> |
| Clogging indicator port drilled for return line application | <b>1</b> |
| Special   | <b>9</b> |

Note: Standard clogging indicator port is 1/8 NPT.



## Spin-On Elements ▪ Type SFC-35 / 36 and SFCT-35 / 36



## Product Description

STAUFF SFC-35/36 series Spin-On Elements are used with the STAUFF SSF-12 Spin-On Filters with G3/4 threaded ports.

STAUFF SFCT-35/36 series Spin-On Elements have an internal 1,7 bar / 25 PSI bypass and anti-drain back diaphragm for use with STAUFF SSFT-12 Tank Top Spin-On Filters.

## Technical Data

## Connection Thread

- G3/4

## Operating Pressure

- SFC: Max. 12 bar / 174 PSI
- SFCT: Max. 7 bar / 100 PSI

## Burst Pressure

- SFC: Max. 25 bar / 363 PSI
- SFCT: Max. 21 bar / 305 PSI

## Temperature Range

- -32°C ... +100°C / -25°F ... +212°F

## Seal Contour

- Type A (see page C133)

## Differential Pressure

- SFC: Max. 4 bar / 58 PSI
- SFCT: Max. 3 bar / 43,5 PSI  
(for any application with no bypass valve)

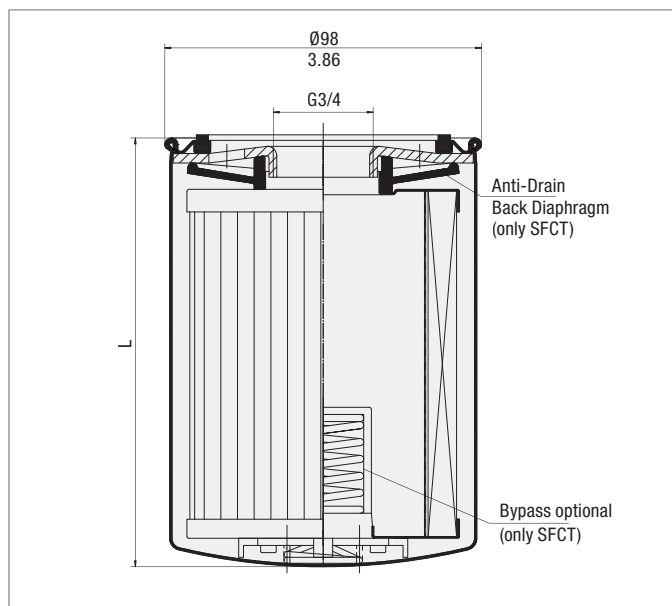
## Bypass Pressure

- 1,7 bar / 25 PSI (only SFCT-series)





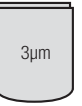


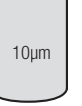


## Media Compatibility





- Mineral oils, other fluids on request

## Dimensions

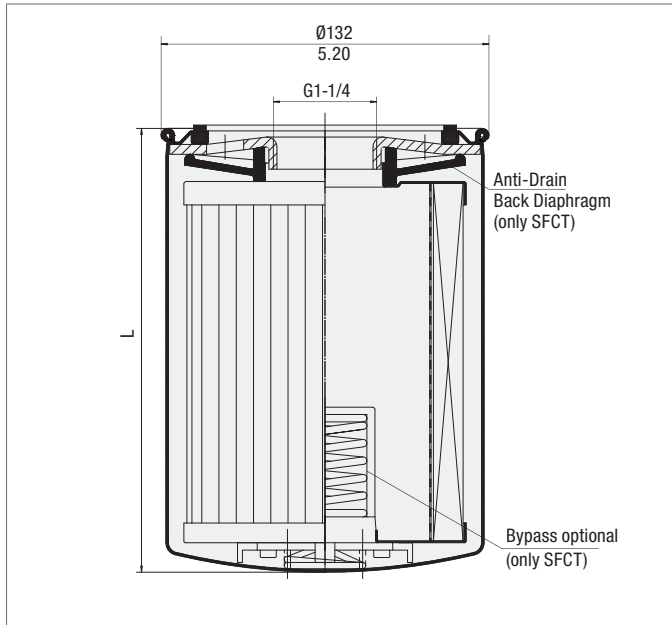


Dimensions in mm / in

| Order Code                                      | Filter Paper  |   |   |   | Inorganic Glass Fibre   |  |   |   |   |   |
|---|---|---|---|---|---|--|---|---|---|---|
|   | SFC-3510E<br>SFCT-3510E   | SFC-3610E<br>SFCT-3610E   | SFC-3525E<br>SFCT-3525E   | SFC-3625E<br>SFCT-3625E   | SFC-3503AE  | SFC-3603AE   | SFC-3510AE<br>SFCT-3510AE   | SFC-3610AE<br>SFCT-3610AE   | SFC-3525AE<br>SFCT-3525AE   | SFC-3625AE<br>SFCT-3625AE   |
| Element without bypass valve                    |  |  |  |  |  |  |  |  |  |  |
| Element with bypass valve                       |   |   |   |   |   |  |   |   |   |   |
| Length L (mm/in)                                | 145<br>5.7  | 190<br>7.5  | 145<br>5.7  | 190<br>7.5  | 145<br>5.7  | 190<br>7.5   | 145<br>5.7  | 190<br>7.5  | 145<br>5.7  | 190<br>7.5  |
| β-Ratio   | $\beta_{10} \geq 2$   | $\beta_{10} \geq 2$   | $\beta_{25} \geq 2$   | $\beta_{25} \geq 2$   | $\beta_3 \geq 200$  | $\beta_3 \geq 200$   | $\beta_{10} \geq 200$   | $\beta_{10} \geq 200$   | $\beta_{25} \geq 200$   | $\beta_{25} \geq 200$   |
| Filter Area (cm <sup>2</sup> /in <sup>2</sup> ) | 3305<br>510   | 4745<br>735   | 3305<br>510   | 4745<br>735   | 2140<br>330   | 3630<br>560  | 2140<br>330   | 3630<br>560   | 2140<br>330   | 3630<br>560   |
| Carton Quantity                                 | 1   | 1   | 1   | 1   | 1   | 1  | 1   | 1   | 1   | 1   |
| Carton Weight (kg/lbs)                          | 0,9<br>2  | 1,3<br>2,6  | 0,9<br>2  | 1,3<br>2,6  | 0,9<br>2  | 1,3<br>2,6   | 0,9<br>2  | 1,3<br>2,6  | 0,9<br>2  | 1,3<br>2,6  |

| Order Code                                      | Wire Mesh   |   | Brass Mesh  |   |
|---|---|---|---|---|
|   | SFC-3560E<br>SFCT-3560E   | SFC-3660E<br>SFCT-3660E   | SFC-35125E<br>SFCT-35125E   | SFC-36125E<br>SFCT-36125E   |
| Element without bypass valve                    |  |  |  |  |
| Element with bypass valve                       |   |   |   |   |
| Length L (mm/in)                                | 145<br>5.7  | 190<br>7.5  | 145<br>5.7  | 190<br>7.5  |
| β-Ratio   | n/a   | n/a   | n/a   | n/a   |
| Filter Area (cm <sup>2</sup> /in <sup>2</sup> ) | 980<br>150  | 1390<br>215   | 980<br>150  | 1390<br>215   |
| Carton Quantity                                 | 1   | 1   | 1   | 1   |
| Carton Weight (kg/lbs)                          | 0,9<br>2  | 1,3<br>2,6  | 0,9<br>2  | 1,3<br>2,6  |

## Spin-On Elements ▪ Type SFC-57 / 58 and SFCT-57 / 58



Dimensions in mm / in



## Product Description

STAUFF Spin-On Filter Elements of the SFC-/SFCT-57/58 series are used with the STAUFF SSF-20/24/25/100/120/130 and 160 series Spin-On Filters with G1-1/4 threaded ports.

STAUFF SFCT-57/58 series Spin-On Elements have an internal 1,7 bar / 25 PSI bypass and anti-drain back diaphragm for use with STAUFF SSFT-20 Tank Top Spin-On Filters.

## Technical Data

**Connection Thread**

- G1-1/4

**Operating Pressure**

- SFC: Max. 12 bar / 174 PSI
- SFCT: Max. 7 bar / 100 PSI

**Burst Pressure**

- SFC: Max. 25 bar / 363 PSI
- SFCT: Max. 21 bar / 305 PSI

**Temperature Range**

- -32°C ...+100°C / -25°F ... +212°F

**Seal Contour**

- Type A (see page C133)

**Differential Pressure**

- SFC: Max. 4 bar / 58 PSI
- SFCT: Max. 3 bar / 43,5PSI  
(for any application with no bypass valve)

**Bypass Pressure**

- 1,7 bar / 25 PSI  
(only SFCT-series)

**Media Compatibility**

- Mineral oils, other fluids on request

## Dimensions

| Order Code                                      | Filter Paper        |                     |                     |                     | Inorganic Glass Fibre |                    |                       |                       |                       |                       |
|---|---------------------|---------------------|---------------------|---------------------|-----------------------|--------------------|-----------------------|-----------------------|-----------------------|-----------------------|
|   | SFC-5710E           | SFC-5810E           | SFC-5725E           | SFC-5825E           | SFC-5703AE            | SFC-5803AE         | SFC-5710AE            | SFC-5810AE            | SFC-5725AE            | SFC-5825AE            |
| Element without bypass valve                    | SFC-5710E           | SFC-5810E           | SFC-5725E           | SFC-5825E           | SFC-5703AE            | SFC-5803AE         | SFC-5710AE            | SFC-5810AE            | SFC-5725AE            | SFC-5825AE            |
| Element with bypass valve                       | SFCT-5710E          | SFCT-5810E          | SFCT-5725E          | SFCT-5825E          | SFCT-5703AE           | SFCT-5803AE        | SFCT-5710AE           | SFCT-5810AE           | SFCT-5725AE           | SFCT-5825AE           |
|   |                     |                     |                     |                     |                       |                    |                       |                       |                       |                       |
| Length L (mm/in)                                | 180<br>7.1          | 226<br>8.9          | 180<br>7.1          | 226<br>8.9          | 180<br>7.1            | 226<br>8.9         | 180<br>7.1            | 226<br>8.9            | 180<br>7.1            | 226<br>8.9            |
| β-Ratio   | $\beta_{10} \geq 2$ | $\beta_{10} \geq 2$ | $\beta_{25} \geq 2$ | $\beta_{25} \geq 2$ | $\beta_3 \geq 200$    | $\beta_3 \geq 200$ | $\beta_{10} \geq 200$ | $\beta_{10} \geq 200$ | $\beta_{25} \geq 200$ | $\beta_{25} \geq 200$ |
| Filter Area (cm <sup>2</sup> /in <sup>2</sup> ) | 5560<br>860         | 7360<br>1140        | 5560<br>860         | 7360<br>1140        | 4450<br>700           | 5890<br>910        | 4450<br>700           | 5890<br>910           | 4450<br>700           | 5890<br>910           |
| Carton Quantity                                 | 1                   | 1                   | 1                   | 1                   | 1                     | 1                  | 1                     | 1                     | 1                     | 1                     |
| Carton Weight (kg/lbs)                          | 1,4<br>3            | 1,85<br>4           | 1,4<br>3            | 1,85<br>4           | 1,4<br>3              | 1,85<br>4          | 1,4<br>3              | 1,85<br>4             | 1,4<br>3              | 1,85<br>4             |

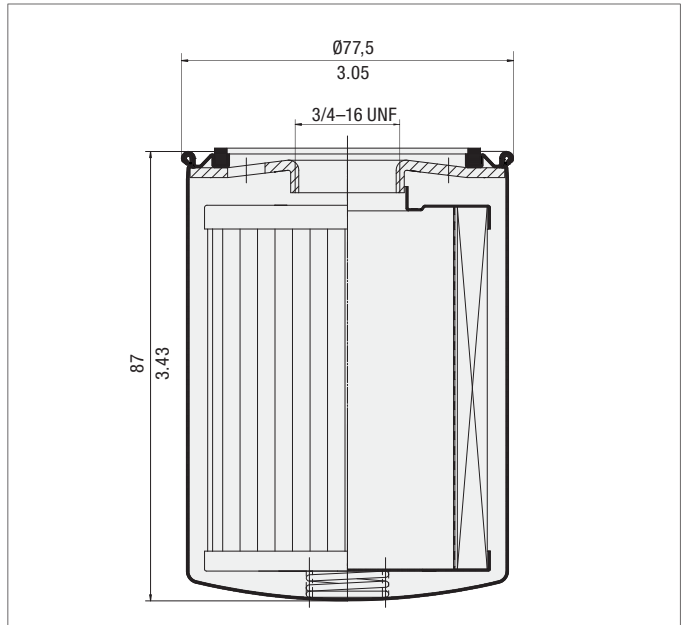
| Order Code                                      | Wire Mesh   |             | Brass Mesh  |             |
|---|-------------|-------------|-------------|-------------|
|   | SFC-5760E   | SFC-5860E   | SFC-57125E  | SFC-58125E  |
| Element without bypass valve                    | SFC-5760E   | SFC-5860E   | SFC-57125E  | SFC-58125E  |
| Element with bypass valve                       | SFCT-5760E  | SFCT-5860E  | SFCT-57125E | SFCT-58125E |
|   |             |             |             |             |
| Length L (mm/in)                                | 180<br>7.1  | 226<br>8.9  | 180<br>7.1  | 226<br>8.9  |
| β-Ratio   | n/a         | n/a         | n/a         | n/a         |
| Filter Area (cm <sup>2</sup> /in <sup>2</sup> ) | 1940<br>300 | 2570<br>400 | 1940<br>300 | 2570<br>400 |
| Carton Quantity                                 | 1           | 1           | 1           | 1           |
| Carton Weight (kg/lbs)                          | 0,9<br>2    | 1,3<br>2,6  | 0,9<br>2    | 1,3<br>2,6  |

## Spin-On Elements ▪ Type SF63



## Product Description

STAUFF SF63-series Spin-On Elements are used with the STAUFF SLF Spin-On Filters.



Dimensions in mm / in

## Technical Data

## Connection Thread

- 3/4-16 UNF

## Seal Contour

- Type A (see page C133)

## Sealing Material

- NBR (Buna-N®)

## Operating Pressure

- Max. 14 bar / 200 PSI

## Differential Pressure

- Max. 5,5 bar / 80 PSI  
(for any application with no bypass valve)

## Burst Pressure

- Max. 20 bar / 290 PSI

## Bypass Pressure

- SF6310-18 1,24 bar / 18 PSI
- SF6325-10 0,70 bar / 10 PSI



## Temperature Range

- -32°C ... +100°C / -25°F ... +212°F

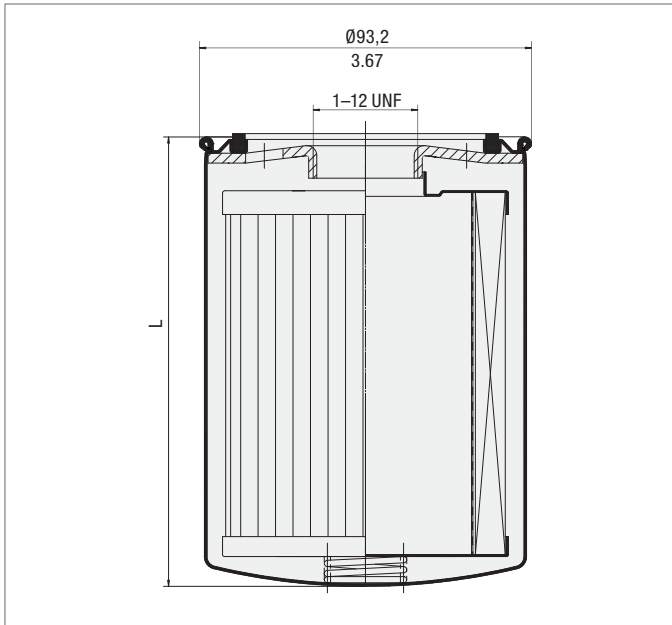
## Media Compatibility

- Mineral oils, other fluids on request

## Dimensions

| Order Code                                      | Filter Paper  |   |
|---|---|---|
|   | SF6310-18   | SF6325-10   |
|   |  |  |
| β-Ratio   | $\beta_{10} \geq 2$   | $\beta_{25} \geq 2$   |
| Filter Area (cm <sup>2</sup> /in <sup>2</sup> ) | 825<br>125  | 825<br>125  |
| Dirt Holding Capacity (g)                       | 6   | 6   |
| Carton Quantity                                 | 12  | 12  |
| Carton Weight (kg/lbs)                          | 3,6<br>8  | 3,6<br>8  |

## Spin-On Elements - Type SF65



Dimensions in mm / in



## Product Description

STAUFF SF65-series Spin-On Elements are used with the STAUFF SAF series Spin-On Filters.

## Technical Data

**Connection Thread**

- 1-12 UNF

**Sealing Material**

- NBR (Buna-N®)

**Differential Pressure**

- Max. 5,5 bar / 80 PSI  
(for any application with no bypass valve)

**Temperature Range**

- -32°C ... +100°C / -25°F ... +212°F

**Seal Contour**

- Type A (see page C133)

**Operating Pressure**

- Max. 14 bar / 200 PSI

**Burst Pressure**

- Max. 20 bar / 290 PSI

**Media Compatibility**

- Mineral oils, other fluids on request

## Dimensions

| Order Code                                      | Filter Paper        |                     |                     |                     | Inorganic Glass Fibre |                       |                       | Water Absorbing                         |
|---|---------------------|---------------------|---------------------|---------------------|-----------------------|-----------------------|-----------------------|---|
|   | SF6520              | SF6521              | SF6510              | SF6511              | SF6549                | SF6505                | SF6504                | SF6520-W                                |
|   |                     |                     |                     |                     |                       |                       |                       |   |
| Length L (mm/in)                                | 147<br>5.76         | 204<br>8.00         | 147<br>5.76         | 204<br>8.00         | 147<br>5.76           | 147<br>5.76           | 147<br>5.76           | 133<br>5.25                             |
| β-Ratio   | $\beta_{10} \geq 2$ | $\beta_{10} \geq 2$ | $\beta_{25} \geq 2$ | $\beta_{25} \geq 2$ | $\beta_3 \geq 200$    | $\beta_{12} \geq 200$ | $\beta_{25} \geq 200$ | $\beta_{10} \geq 2$                     |
| Filter Area (cm <sup>2</sup> /in <sup>2</sup> ) | 2302<br>355         | 3881<br>600         | 2212<br>340         | 3388<br>525         | 2519<br>390           | 2405<br>370           | 2405<br>370           | 1225<br>200                             |
| Dirt Holding Capacity ACFTD (g)                 | 14.4                | 22                  | 20.4                | 31.2                | 19                    | 11                    | 26                    | Water holding capacity<br>162 ml 5.5 oz |
| Carton Quantity                                 | 12                  | 12                  | 12                  | 12                  | 12                    | 12                    | 12                    | 12                                      |
| Carton Weight (kg/lbs)                          | 6,3                 | 8,4                 | 6,4                 | 8,8                 | 8,6                   | 8,6                   | 8,6                   | 8,6                                     |
|   | 13.9                | 18.5                | 14.2                | 19.4                | 19                    | 19                    | 19                    | 19                                      |

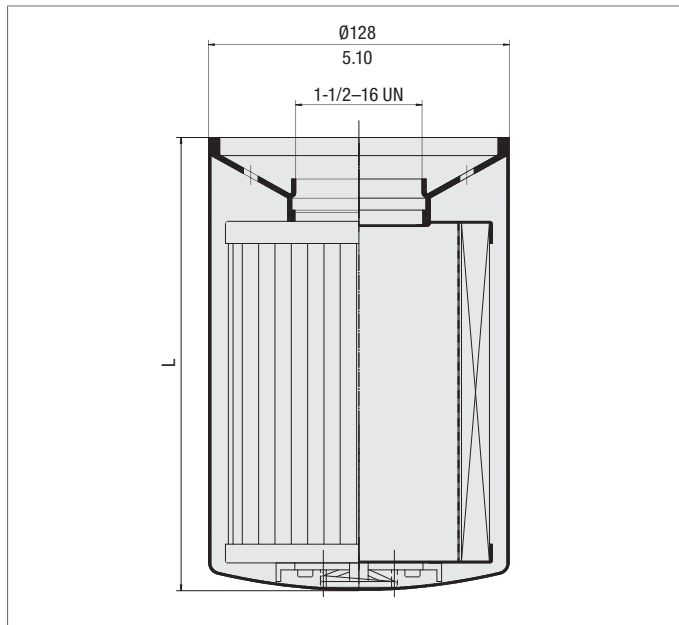


## Spin-On Elements ▪ Type SF67



## Product Description

STAUFF SF67-series Spin-On Elements are used with the STAUFF SSF20/24/25/100/120/130/160/150 and 180 Spin-On Filters.



Dimensions in mm / in

## Technical Data

## Connection Thread

- 1-1/2-16 UN

## Sealing Material

- NBR (Buna-N®)

## Differential Pressure

- Max. 5,5 bar / 80 PSI  
(for any application with no bypass valve)

## Temperature Range

- -32°C ... +100°C / -25°F ... +212°F

## Seal Contour

- Type B (see page C133)

## Operating Pressure

- Max. 14 bar / 200 PSI










## Burst Pressure







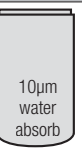
- Max. 20 bar / 290 PSI

## Media Compatibility

- Mineral oils, other fluids on request

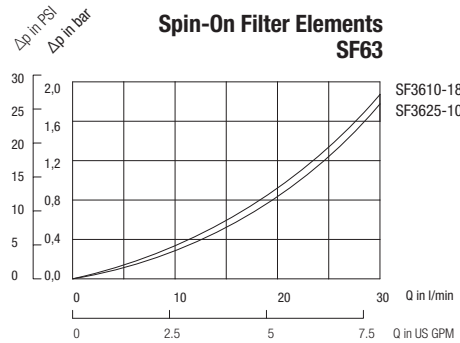
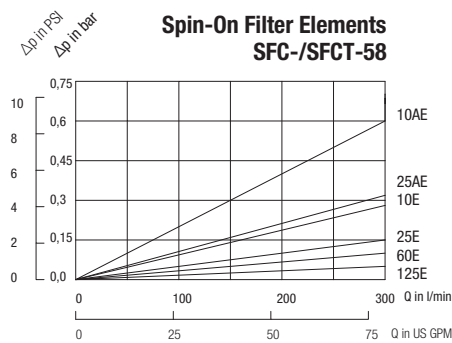
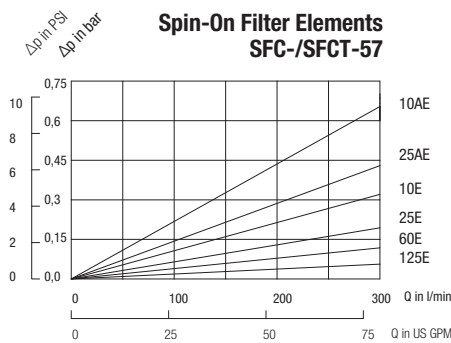
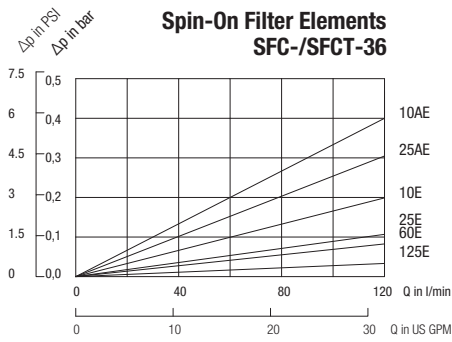
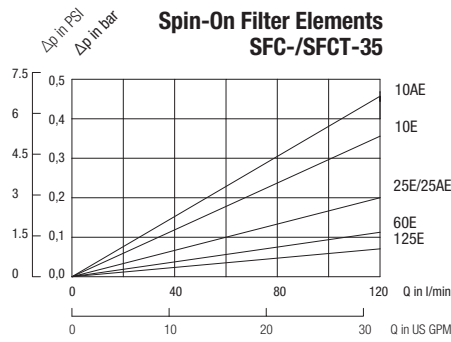
## Dimensions

| Order Code                                      | Inorganic Glass Fibre   |   |   |   |   |  |   |   |   |
|---|---|---|---|---|---|--|---|---|---|
|   | SF6702-MG   | SF6703-MG   | SF6704-MG   | SF6706-MG   | SF6707-MG   | SF6730-MG  | SF6731-MG   | SF6728-MG   | SF6726-MG   |
|   |  |  |  |  |  |  |  |  |  |
| Length L (mm/in)                                | 270<br>10.6   | 168<br>6.6  | 270<br>10.6   | 168<br>6.6  | 270<br>10.6   | 168<br>6.6   | 270<br>10.6   | 168<br>6.6  | 270<br>10.6   |
| β-Ratio   | β <sub>1</sub> ≥ 200  | β <sub>3</sub> ≥ 200  | β <sub>3</sub> ≥ 200  | β <sub>6</sub> ≥ 200  | β <sub>6</sub> ≥ 200  | β <sub>12</sub> ≥ 200  | β <sub>12</sub> ≥ 200   | β <sub>25</sub> ≥ 200   | β <sub>25</sub> ≥ 200   |
| Filter Area (cm <sup>2</sup> /in <sup>2</sup> ) | 8167<br>1265  | 4051<br>625   | 8167<br>1265  | 4051<br>625   | 7200<br>1116  | 4051<br>625  | 7522<br>1165  | 4051<br>625   | 8167<br>1265  |
| Dirt Holding Capacity ACFTD (g)                 | 30  | 31  | 47  | 35  | 54  | 38   | 59  | 50  | 76  |
| Carton Quantity                                 | 6   | 6   | 6   | 6   | 6   | 6  | 6   | 6   | 6   |
| Carton Weight (kg/lbs)                          | 11,8<br>26.1  | 8,2<br>18   | 11,8<br>26.1  | 8,2<br>18   | 11,8<br>26.1  | 8,2<br>18  | 11,8<br>26.1  | 8,2<br>18   | 11,8<br>26.1  |

| Order Code                                      | Filter Paper  |   |   |   | Stainless Wire Mesh   |   | Water Absorbing   |
|---|---|---|---|---|---|---|---|
|   | SF6720  | SF6721  | SF6710  | SF6711  | SF6790  | SF6791  | SF6721-W  |
|   |  |  |  |  |  |  |  |
| Length L (mm/in)                                | 168<br>6.6  | 270<br>10.6   | 168<br>6.6  | 270<br>10.6   | 168<br>6.6  | 270<br>10.6   | 270<br>10.6   |
| β-Ratio   | β <sub>10</sub> ≥ 2   | β <sub>10</sub> ≥ 2   | β <sub>25</sub> ≥ 2   | β <sub>25</sub> ≥ 2   | n/a   | n/a   | β <sub>10</sub> ≥ 2   |
| Filter Area (cm <sup>2</sup> /in <sup>2</sup> ) | 3677<br>570   | 6813<br>1055  | 3677<br>570   | 6813<br>1055  | 1290<br>200   | 2032<br>315   | 4440<br>690   |
| Dirt Holding Capacity ACFTD (g)                 | 34  | 62  | 34  | 62  | n/a   | n/a   | Water holding capacity<br>444 ml / 15 oz  |
| Carton Quantity                                 | 6   | 6   | 6   | 6   | 6   | 6   | 6   |
| Carton Weight (kg/lbs)                          | 6,6<br>14.6   | 7,9<br>17.5   | 6,7<br>14.9   | 9,3<br>20.6   | 8,2<br>18   | 11,8<br>26.1  | 11,8<br>26.1  |

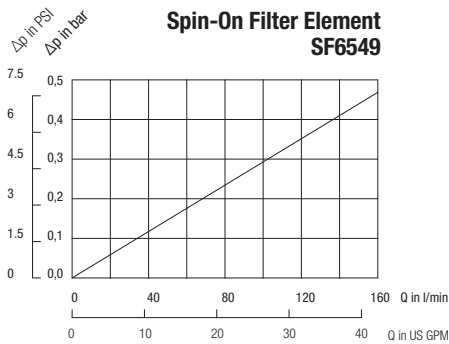
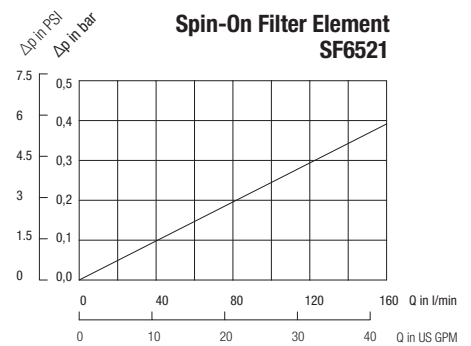
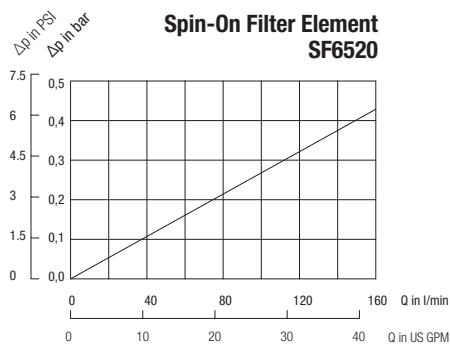
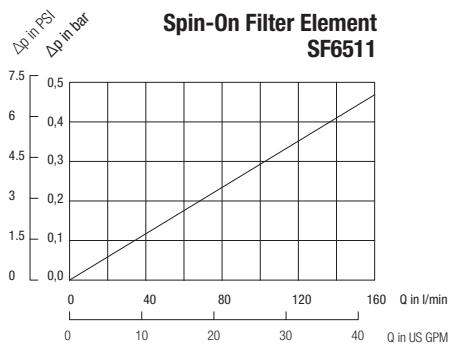
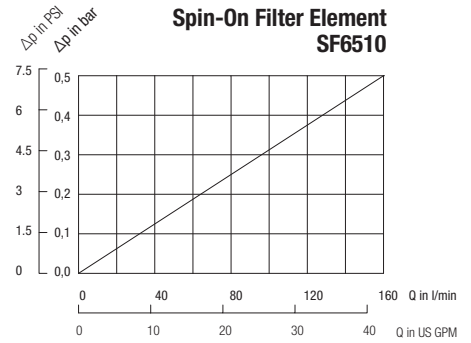
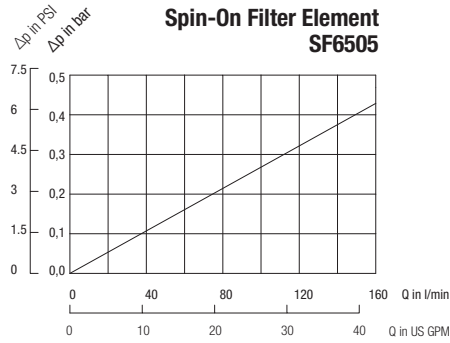
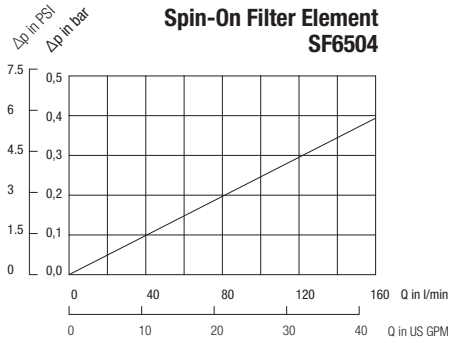
**Spin-On Elements ▪ Type SFC/SFCT-35/36, SFC/SFCT-57/58 and SF63**

The following characteristics are valid for mineral oils with a density of 0,85 kg/dm<sup>3</sup> and the kinematic viscosity of 30 mm<sup>2</sup>/s (30 cSt). The characteristics have been determined in accordance to ISO 3968. SFC-35/36 series Spin-On Elements are used with STAUFF SSF-12 Spin-On Filters, SFCT-35/36 series Spin-On Elements are used with STAUFF SSFT-12 Spin-On Filters, SFC-57/58 series Spin-On Elements are used with STAUFF SSF-20/24/25/100/120/130/160 Spin-On Filters, SFCT-57/58 series Spin-On Elements are used with STAUFF SSFT-20 Spin-On Filters and SF63 series Spin-On Elements are used with STAUFF SLF-02/03/04 Spin-On Filters.



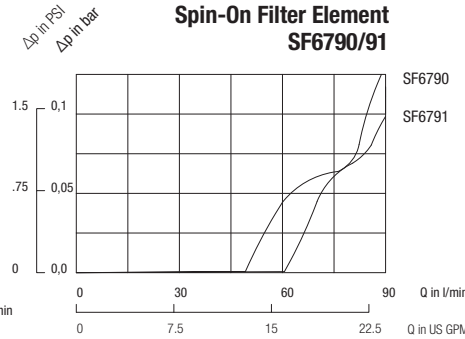
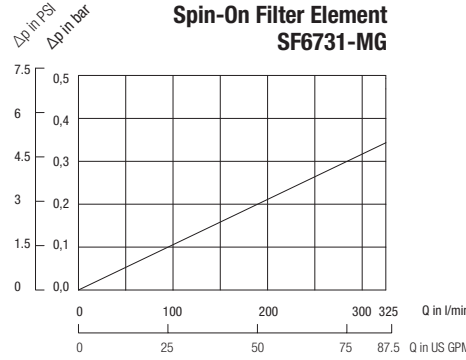
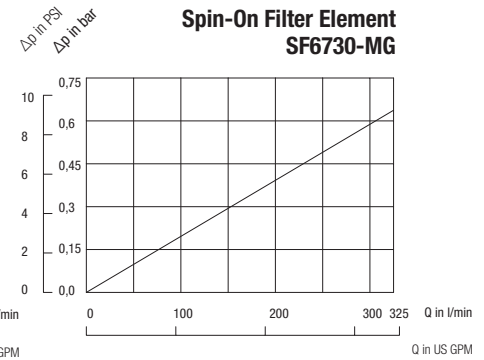
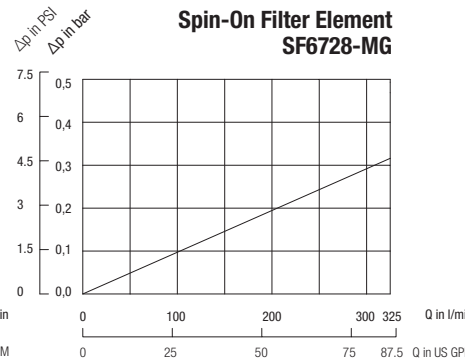
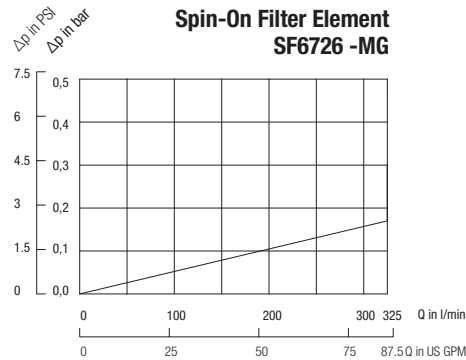
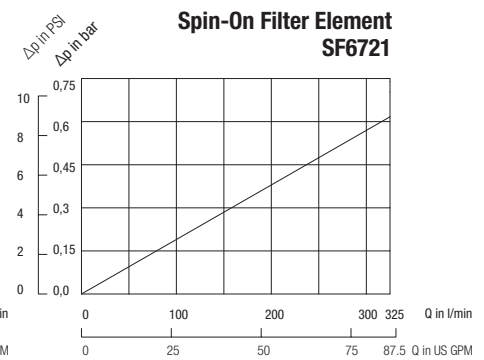
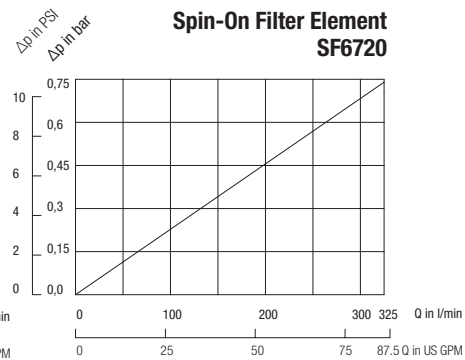
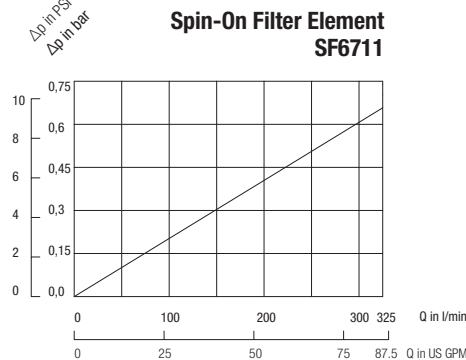
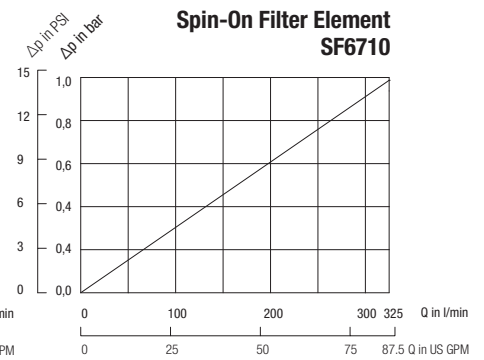
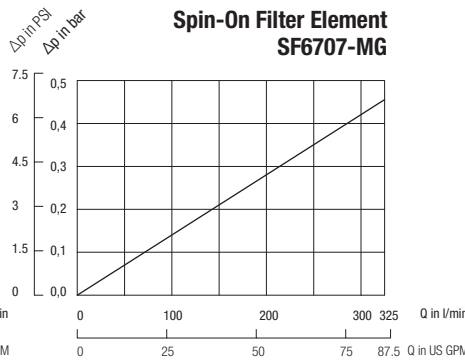
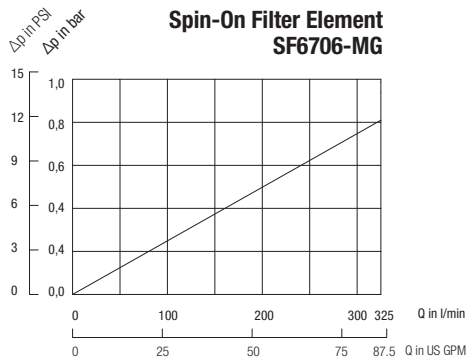
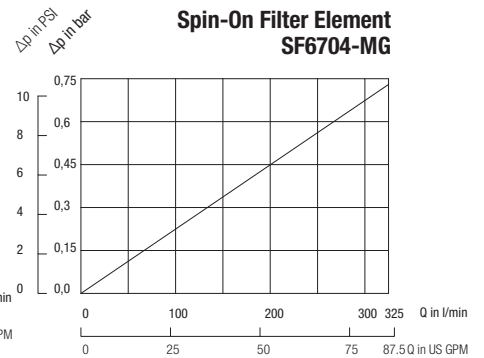
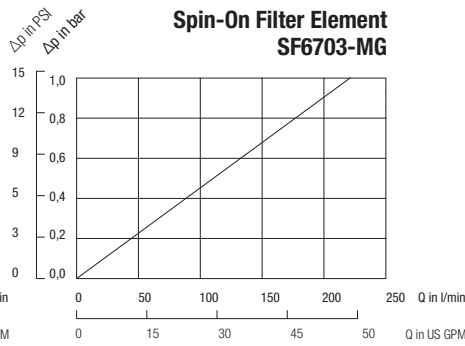
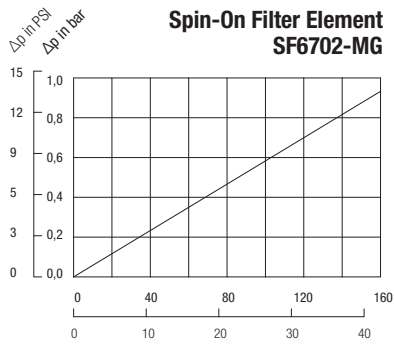
## Spin-On Elements - Type SF65

The following characteristics are valid for mineral oils with a density of 0,85 kg/dm<sup>3</sup> and the kinematic viscosity of 30 mm<sup>2</sup>/s (30 cSt). The characteristics have been determined in accordance to ISO 3968. SF65 Spin-On Elements are used with the STAUFF SAF-05/06/07/10/11/13 Spin-On Filters.



Spin-On Elements - Type SF67

The following characteristics are valid for mineral oils with a density of 0,85 kg/dm<sup>3</sup> and the kinematic viscosity of 30 mm<sup>2</sup>/s (30 cSt). The characteristics have been determined in accordance to ISO 3968. SF67 Spin-On Elements are used with the STAUFF SSF-20/24/25/100/120/130/160/150/180 Spin-On Filters.



Clogging Indicators

Visual Clogging Indicators



SIS



GV-10



SIM-04



CI-12

| Visual Vacuum Clogging Indicators (for Spin-On Filter in suction line applications) |       |                     |               |                |                   |             |             |                              |
|---|-------|---------------------|---------------|----------------|-------------------|-------------|-------------|------------------------------|
|   | Type  | Thread Connection G | Unit of scale | Range of scale | Coloured Segments |             |             | Valve setting Spin-On Filter |
|   |       |                     |               |                | Green             | Yellow      | Red         |                              |
| BSP   | SIS   | 1/8                 | cm Hg         | -76 ... 0      | -13 ... 0         | -18 ... -13 | -76 ... -18 | 0,2 bar/ 3 PSI               |
|   | GV-5  | 1/8                 | in Hg         | -30 ... 0      | -4 ... 0          | -6 ... -4   | -30 ... -6  | 0,2 bar/ 3 PSI               |
| NPT   | GV-10 | 1/8                 | in Hg         | -30 ... 0      | -9 ... 0          | -11 ... -9  | -30 ... -11 | 0,35 bar/ 5 PSI              |

| Visual Pressure Clogging Indicators (for Spin-On Filter in return line applications) |        |                     |               |                |                           |             |             |                              |
|--|--------|---------------------|---------------|----------------|---------------------------|-------------|-------------|------------------------------|
|  | Type   | Thread Connection G | Unit of scale | Range of scale | Coloured Segments         |             |             | Valve setting Spin-On Filter |
|  |        |                     |               |                | Green                     | Yellow      | Red         |                              |
| BSP  | SIM-02 | 1/8                 | bar           | 0 ... 2,5      | 0 ... 1,2                 | 1,2 ... 1,5 | 1,5 ... 2,5 | 1,7 bar / 25 PSI             |
|  | SIM-04 | 1/8                 | bar           | 0 ... 4        | 0 ... 2,5                 | 2,5 ... 3   | 3 ... 4     | 1,7 bar / 25 PSI             |
|  | SIM-12 | 1/8                 | bar           | 0 ... 12       | without coloured segments |             |             | 1,7 bar / 25 PSI             |
| NPT  | CI-12  | 1/8                 | PSI           | 0 ... 100      | 0 ... 13                  | 13 ... 15   | 15 ... 100  | 1 bar / 15 PSI               |
|  | CI-20  | 1/8                 | PSI           | 0 ... 100      | 0 ... 21                  | 21 ... 25   | 25 ... 100  | 1,7 bar / 25 PSI             |

Electrical Clogging Indicators



SIE-NO/NC



EPS/EVS

| Electrical Clogging Indicators (for Spin-On Filter in return line or suction line applications) |        |                     |               |                                       |                    |                            |                              |
|---|--------|---------------------|---------------|---------------------------------------|--------------------|----------------------------|------------------------------|
|   | Type   | Thread Connection G | Unit of scale | Adjustable range / Actuating pressure | Max. over pressure | Spin-On filter application | Valve setting Spin-On Filter |
| BSP   | SIE-NO | 1/8                 | bar           | 1,3 (normally open)                   | 80 bar / 1160 PSI  | Return line application    | 1,7 bar / 25 PSI             |
|   | SIE-NC | 1/8                 | bar           | 1,3 (normally closed)                 | 80 bar / 1160 PSI  | Return line application    | 1,7 bar / 25 PSI             |
|   | EPS-1B | 1/8                 | bar           | 0,35 ... 2,5                          | 25 bar / 362 PSI   | Return line application    | 1,7 bar / 25 PSI             |
|   | EVS-1B | 1/8                 | mbar          | -1000 ... -150                        | 25 bar / 362 PSI   | Suction line application   | 0,2 bar / 3 PSI              |
| NPT   | EPS-1  | 1/8                 | PSI           | 5 ... 35                              | 24 bar / 350 PSI   | Return line application    | 1,7 bar / 25 PSI             |
|   | EVS-1  | 1/8                 | in Hg         | -30 ... -5                            | 24 bar / 350 PSI   | Suction line application   | 0,2 bar / 3 PSI              |

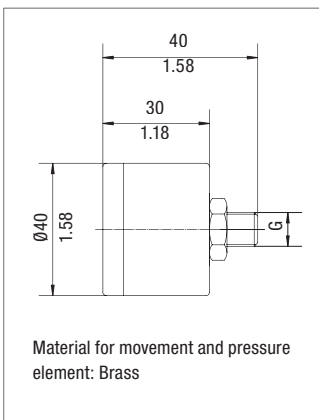
Technical Data SIE / EPS / EVS

|   | Type EPS-1 / 1B                                       | Type EVS-1 / 1B                    |
|---|---|------------------------------------|
| Electrical data                         | 6 Amp 125/250 V AC                                    |                                    |
| Protection                              | DIN 43650 IP65  |                                    |
| Temperature Range                       | -5°C ... +90°C / +23°F ... +194°F (ambient and media) |                                    |
| Diaphragm Material                      | NBR (Buna-N®)   | NBR (Buna-N®)                      |
| Housing Material                        | Brass   | Steel                              |
| Adjustable Range                        | 0,35 bar ... 2,0 bar / 5 ... 30 PSI                   | 150 ... 1000 mbar / 5 ... 30 in Hg |
| Dead Band                               | 20% F.S.  | 25% F.S.                           |
| Weight                                  | 0,1 kg / .22 lbs                                      | 0,1 kg / .22 lbs                   |
| Repeatability                           | ± 2%  |                                    |
| Hirschmann Connector With Strain Relief |   |                                    |

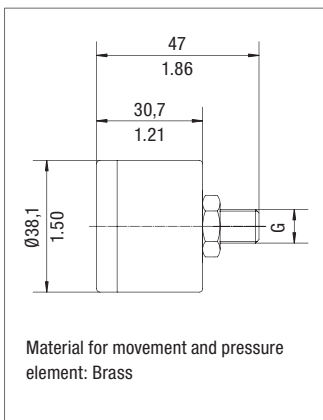
|  | Type SIE (electrical switch)                             |
|--|--|
| Electrical data  | 48V  |
| Protection   | DIN 43650 IP54   |
| Temperature Range  | -5 °C ... +60 °C / 23 °F ... +140 °F (ambient and media) |
| Diaphragm Material   | NBR (Buna-N®)  |
| Housing Material   | Brass  |
| Actuating Pressure   | 1,3 bar / 19 PSI   |
| Max. current (res.)  | 0,5 A  |
| Max. current (ind.)  | 0,2 A  |
| Available as "normally open" (closes contact at actuating pressure) and as "normally closed" (opens contact at actuating pressure) |  |

Dimensions

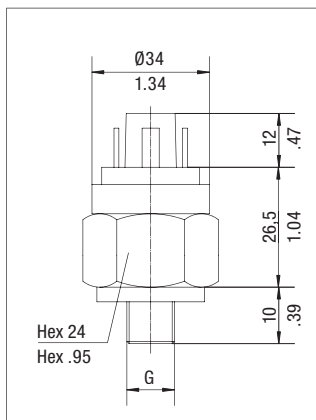
Type SIM / SIS



Type GV / CI



Type SIE



Type EPS / EVS

